



UPCOMING PROGRAMS

**2006-2007
Officers**

President
Lynn Richardson

Vice President
Linda Wells

Secretary
Marilyn Finley

Treasurer
Janet Munn

MARCH

March Board Meeting: March 5, 6:30 PM at Foster Community Center. All members welcome!

Guild Meeting: Thursday, March 13, 7:15 pm

Program: CCQG Challenge Quilts

Also in this meeting, the outgoing board will present the slate of new officers for review by the guild. We will also have the Heartwarmers Baby Quilt Parade.

APRIL

April Board Meeting: April 2, 6:30 PM at Foster Community Center. All members welcome!

Guild Meeting: Thursday, April 19, 7:15 pm.

Program: Here is Where I Work, Part Deux

John Putnam, guild member, will present another slide show of members' sewing rooms. His first slide show was one of that year's favorite programs.

Capitol City Quilt Guild meets on the third Thursday of each month at Faith Church, 2300 Lake Lansing Road, Lansing (across from Eastwood Towne Center).

IT'S ALMOST HERE!

GOING TO PIECES 2007

**Saturday, March 31 and Sunday, April 1
Haslett High School, Haslett, MI.**

INSIDE THIS ISSUE:

<i>President's Message</i>	2
<i>Small Group news</i>	3
<i>Community Page</i>	4
<i>Quilt Show Info</i>	5
<i>Events Calendar</i>	8

**VOLUNTEERS STILL
NEEDED!!!**

We still need volunteers to work at the 2007 Quilt Show. If you have not had a chance to sign up, please contact Coreen Strzalka or Mary Dunn.

DON'T FORGET.....

You can put those finishing touches on your show quilts at National Quilting Day on March 17, at the Holt Presbyterian Church from 9am-3:30pm. See the previous newsletter for more information or contact Rosemary Nester or Susan Lilly for details.

PRESIDENT'S MESSAGE

The sun was warm but the wind was chill.
 You know how it is with an April day
 When the sun is out and the wind is still,
 You're one month on in the middle of May.
 But if you so much as dare to speak,
 A cloud comes over the sunlit arch,
 A wind comes off a frozen peak,
 And you're two months back in the middle
 of March.

Robert Frost, *Two Tramps in Mud Time*

In the last newsletter, I was bemoaning the lack of winter. Now it has arrived and Michigan is in a deep freeze, even more than usual. And as Frost suggests, sometimes spring is rather elusive and any day between March and May can be more reminiscent of February. But like most of us who live here, I love the change of seasons and winter seems unnatural without a covering of white. It is an excuse to hibernate and that, to me, means an opportunity to read, rest, and sew.

By the time that you receive this newsletter, the quilt show will be only a few weeks away. I hope that all of you have asked to hang at least one quilt in the show. It is a wonderful opportunity for us to share the fruits of our labor, whether it is a miniature quilt or one for a king-size bed. And I also hope that you all have volunteered to help at the show. There are lots of jobs available, sedentary to mobile. Please contact Mary Dunn if you have not already signed up. And please help those on the committee by not waiting until the last minute to volunteer. While we usually can accommodate those who come to the show and are willing to help, it

provides all of us some comfort to know that the positions will be covered. Remember that "many hands make light work." If you need some extra motivation, those who sign up in advance of the show will be eligible for some terrific door prizes! Join all of us to share and celebrate our craft and each other!

If you cannot be at the show, there are other ways in which you can help. If you have orphan blocks around, use them to make placemats, table runners, or pillows for the silent auction. You also could sell raffle tickets on the guild's quilt. Remember that the quilt show and the raffle quilt provide our operating budget for the next two years. We can only continue to invite speakers such as those that have visited in the last year—Beth Ann Williams, Deloa Jones, Edyta Sitar, and Ami Simms—because of the funds that we raise at the quilt show and through the sales of raffle tickets.

Then sit back and enjoy the last two programs of the year. The scrap quilts that you are making for the March challenge are sure to be anything but traditional. And John Putnam will expose the work space of some more of our members in April! Thankfully, he has not asked to see the warren in which I sew!

As the daffodils and tulips begin to unfold this spring, and the greens of the willow start to emerge, allow your creativity to blossom as well.

Lynn

This month, and following months, the newsletter will be sent only to those who did not opt to receive it on the website. The newsletter is available online at <http://capitolcityquiltguild.org> in PDF format for easy downloading and printing.

Labels are now available at the library for your Heartwarmers quilts

**THE CCQG WEBSITE IS
HERE!!!**

Check it out!

<http://capitolcityquiltguild.org>

Small Group News

The new small group in St. Johns is called the Mint City Patchers. They are meeting the second Tuesday of the month from 1:30 to 3:30 pm, at the St. Johns Library, across the street from the Depot Art Center. Their first project is to make a quilt for the library. New members are welcome. You should live near St. Johns, Ovid, and Elsie to be a member.

There has been some interest in starting a short-arm machine quilting small group. If you would like to join such a group, please contact Gail Drayton or Judith Green.

The Lansing Area Long Armers (LALA's) are now open to new members. You should have a long-arm quilting machine to be a member. The LALA's will have a booth at the CCQG quilt show, where you can talk to them about joining. Long-arm machines are so different from short-arms that the LALA's are unable to help solve the problems that short-armers have with their machines and frames.

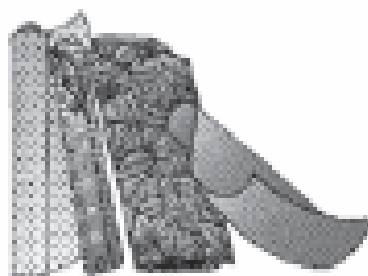
Get Well Soon

Florence Vogt had surgery on February 16. Please remember her with a card, note, or a 6" nine-patch.

Norine Antuck has to find a secure facility for her husband and openings are very scarce. This has been a very stressful time for her and her family. Please remember her with cheerful note and a 6" nine-patch block.

Don't forget to make your block for our President's Quilt as a thank you to Lynn Richardson, for her hard work as President this past year. The instructions for the 9" (finished) Ohio Star block are on page 6.

Luck of the Irish Sale



15-50% OFF

In East Lansing &
Jackson (on Boardman)



**Thurs. March 15 -
Sat. March 17**

Country Stitches 

2200 Coolidge Road • East Lansing
(517) 351-2416 or 1-800-572-2031

Spin the wheel and receive from 15% to 50% off all fabric, notions, books, patterns and threads (including sale items). Then you decide what's on sale. You just pick out everything you want to buy and receive your discount. (Limit one lucky spin per person.)

COMMUNITY PAGE

Quilts: True Art III

Don't miss the exhibit of 53 small quilts at the Belen Gallery of the Michigan Women's Historical Center and Hall of Fame. The exhibit was curated by Linda Kuhlman and Cindy Mielock and features works by members of the Capitol City Quilt Guild and the Lansing Area Patchers. The exhibit will be on display until April 22, 2007. The Michigan Women's Historical Center and Hall of Fame is Located at 213 W. Main Street, Lansing, MI 48933 Hours: Wed.-Fri. 12-5 pm, Sat. 12-4 pm and Sun. 2-4 pm. The center is closed on Major Holidays

A new volunteer at Sparrow has begun a campaign to make small baby quilts, personalized with embroidery, for the Neonatal Center. She has helped herself to the Industrial League's fabric stash to fulfill her needs, and as a result, has almost depleted the league's supply. The Industrial League is responsible for making Foley bag covers, binders, walker bags, and stuffed animals. They are looking for sources to replace the lost fabric supply, and are in desperate need of any cottons, cotton blends, flannels; no knit-type fabric, and no pieces smaller than 6 inches square. The league combines the smaller pieces to make 12-inch squares to create small stuffed animals for pediatrics. You can contact Judith Green for pick-up or bring the fabrics to the guild meeting. She will deliver the fabric to the campus location, since the league meets in the same area her group meets. She is hoping to acquire enough fabric to accommodate the league, and start a pile for this new volunteer. Any help would be appreciated.

Fran Mort says "we're doing it again" with another Katrina Project for 2007. She is looking for odd blocks, 4" squares, tops, fabric and any other quilt articles anyone can donate. If you have some to share, please contact Fran.

Fat Chance & Tiny Treats Winners
January
 Tiny Treats
 Shirley Linn
 Fat Chance
 Virginia Martin
 Jean Carlson
February
 Tiny Treats
 Jean Carlson (21)
 Fat Chance
 Judy Silsby (9)
 Sarah Berry (9)



THANKS!!!

Thanks to everyone who sent me cards and 9-patches, it is nice to be remembered. I hope that I will soon be able to get out more and make it to the guild meetings. Thanks again, Nelda Orr.

A big heartfelt thanks to all who sent cards, 9 patches, phone calls, etc. during my recent illness!!! They sure helped to make me get better! Our quilters are the best-truly the best anywhere! God bless each one!
 Love, Fran Mort

The Capital Area Humane Society is accepting Cat Mats that are 20"x28". Now we know that they also need Dog Mats that are 40"x28". These are used in the cages with cement floors, which are extremely cold in the winter. Members will be sewing cat and dog mats at National Quilting Day on March 17, 2007.



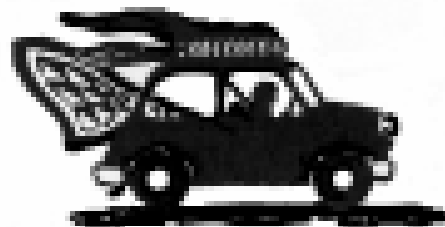
COUNTDOWN TO THE SHOW!!!

IT'S ALMOST HERE!!!

GOING TO PIECES 2007

Saturday, March 31 and Sunday, April 1

Haslett High School, Haslett, MI.



THE RULES

(As posted by John Putnam on the Guild website)

- **YOU MUST HAVE A SLEEVE SECURELY ATTACHED!!!!** Attach a hanging sleeve to entries for display. Large quilts: construct a tube from a 9" wide strip of fabric for a finished 4" sleeve. The sleeve should be almost the width of the quilt. Firmly sew the top and bottom edges of the sleeve to the quilt back. Small quilts: Your finished sleeve should be at least 2" wide. **Quilts will not be hung without an appropriately and securely attached sleeve.**
- **Labeling:** Stitch, or baste, a fabric label on the bottom of the back of your quilt. This label should include your name and the quilt title. You may include any other information that you wish.
- **Packaging:** Place the quilt in a cloth sack or pillowcase. One sack - One Quilt!! Label the sack or baste or safety pin a fabric label on the sack with your name and quilt title. If any item needs special handling, please attach a note to the registration form and also the sack in which it is packaged. **NO PLASTIC BAGS.**

Drop Off Information

Drop Off-LANSING

Deliver your quilt to John Putnam on either Friday, March 23, or Saturday March 24, from 9:00 a.m.- 1:00 p.m.

OR

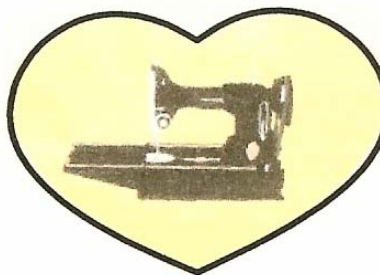
Drop Off-EAST LANSING

Deliver your quilt to Claire Vlasin on either Friday, March 23, or Saturday March 24 from 9am - 1:00 p.m.

Quilts not delivered by the deadline will be considered withdrawn.

**Have You Sold Your Raffle Tickets?
Need More?**

**Contact Bev Wilkinson for Raffle
Ticket details.**



*Quilt Sister
Featherweights*

*Jill Cooley
Lansing, MI 48917*

517-214-3178

Pre & Post WWII Ladies, Loved, & Ready to Sew!

Sales & Repair with 30 day guarantee

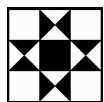
New Quilt Show on PBS

The *Art of Quilting*, airing on PBS as part of the March 2007 membership drive, explores the diverse techniques and artistry reflected in contemporary American art quilts through artistic exhibitions and quilt artists at work in their studios. Viewers will discover how the boundaries of traditional American quilt making have expanded to an art form that now adorns the walls of exhibit halls and art galleries worldwide.

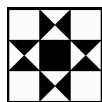
Artists appearing in the program include: Bob Adams, Frieda Anderson, Jane Burch Cochran, Melody Johnson, Pat Kroth, Carol Krueger, Judy Langille, Emily Parson, Pam RuBert, Diane Savona, Kristin Hoelscher Schacker, Deborah Schwartzmann, Laura Wasilowski, Jeanne Williamson.

The *Art of Quilting* also includes the works of Virginia Abrams, Tafi Brown, Judith Content, Natasha Kempers Cullen, Gretchen Echols, Susan Else, Leesa Zarinelli Gawlik, Marla Hattabaugh, Eileen Lauterborn, Linda Levin, Therese May, Paula Nadelstern, Jan Myers Newbury, Julia Pfaff, Lori Lupe Pelish, Dinah Sargeant, Joy Saville, Patti Shaw, Janet Steadman, Kathyanne White.

Check local listings for date and time.



President's Block



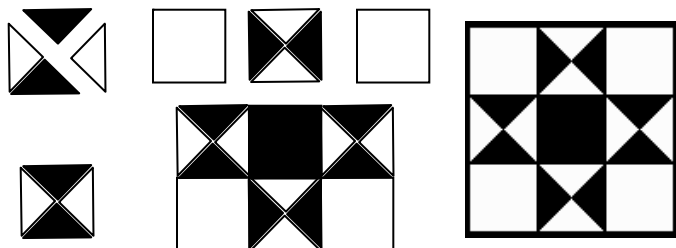
Let's each give Lynn Richardson a warm thank you for being our President. Please make her an Ohio Star block in bright and happy colors. (9 1/2" unfinished)

Cut 2 background and 2 color squares 4 1/4" x 4 1/4" and cut each diagonally twice.

Cut 4 squares 3 1/2" x 3 1/2" of background fabric.

Cut 1 square 3 1/2" x 3 1/2" for center.

Piece like this:



Please sign the front of your block and leave it at the VP's table or give it to Mary Dunn.

Questions? Call Mary at 517-339-6804.

CCQG AD RATES

Reach over 200 Quilters in one place!

Half-page \$30

Quarter page \$15

Business Card Size \$10

CCQG members receive a 20% discount on advertising. Please mail copy ready ads and payment to:

Capitol City Quilt Guild
PO Box 26022
Lansing, MI 48909

Treasurer's Report - March 2007

Treasurer Janet Munn reported the following information: Balances (as of March 5, 2007): Checking \$2,256.48, Savings \$10,551.49, Total cash balance 12,807.97.

See the monthly financial statement and show report at the vice-president's table and on request from the treasurer.



NANCY ODOM, quilter, designer, author, and teacher, will be in Shipshewana on Friday & Saturday, May 18 & 19, 2007. Nancy has appeared on TV and has designed fabric for P&B Textiles. She is a popular teacher and lecturer at quilt shows, guilds, and quilt shops. Don't miss this exciting opportunity to see, hear and interact with Nancy personally!



Come join us for two full days of fun activities!!

Visit our Website often for updated information.



*Yoder's Block of the Month
By Nancy Odom*



MAY 18 & 19, 2007

Please mark your calendar and plan to attend. Registrations will be limited. Watch for additional information coming in print and on our web site.

Summer hours:

Monday - Tuesday 8:00 to 6:30

Wednesday - Saturday 8:00 to 5:30

YODER'S SHOPPING CENTER

SR 5, Shipshewana, IN

www.yoderdepartmentstore.com

260-768-4887

IN MEMORIAM

Dorothy Deeg, longtime CCQG member, passed away on Friday, March 2, at home in Mason. She is survived by her husband of 58 years, Bruce Deeg and her sister Margaret Crandall, as well as 7 daughters, 20 grandchildren and 8 great-grandchildren.

Mary Schafer quietly passed away on Friday morning, December 22, 2006. The MSU Museum has a collection of Mary's quilts, http://www.museum.msu.edu/glqc/collections_special_schafe.html. Mary was a lifetime member of the Genesee Star Quilters (Flint area). Mary's many honors include resolutions from Senator Hillary Rodham Clinton, former Gov. John Engler, former Flint Mayor Woodrow Stanley and the Genesee County Board of Commissioners. Crossroads Village held a day in her honor in 1995 and she was given a Michigan Heritage Award in 2002, http://museum.msu.edu/s-program/mh_awards/awards/2002M_S.html. On July 19, 2007, her granddaughter Deborah Schmondiuk, will be in Marion, Indiana at the posthumous induction of Mary into the National Quilters Hall of Fame, <http://www.quiltershalloffame.org/QHFCelebration2007.htm>.

If you have an AQS \$3 book certificate you do not plan to use, please consider giving it to Kristen Forester to purchase library books. Thanks!

Newsletter on the Web (how to opt out on the newsletter by mail)

Please contact membership chair Linda Ziegenhagen if:

- You do not want to receive the newsletter by mail (you will download it yourself from the CCQG website) or;
- You do not remember if you signed up to stop receiving the newsletter by regular mail.

The newsletter should be ready for downloading at the same time you would receive it by mail (during the second week of odd months).

Capitol City Quilt Guild
P.O. Box 26022
Lansing, MI 48909



We're on the Web!!!
[http://
capitolcityquiltguild.org](http://capitolcityquiltguild.org)

Next Newsletter Deadline: April 15

AREA QUILTING EVENTS

March 15, 2007
Denise Duca, lecture
Cameo Quilt Guild, Clawson, MI
Contact: Carolyn Scheffler, 248-689-0206

March 18, 2007
Beth Ferrier, lecture
Greater Ann Arbor Quilt Guild, Ann Arbor, MI
Contact: <http://www.gaaqg.org>

March 20, 2007
Penny Sempert, lecture
Log Cabin Quilters, Kalamazoo, MI
Contact: <http://www.log-cabin-quilters.com>

March 24-25, 2007
Quilts from the Heart Show
Metro Detroit Quilt Guild, Harper Woods, MI
Contact: Karen Stockse,
kastocksett@comerica.com

March 27, 2007
Pat Sloan, lecture and workshops
West Michigan Quilters Guild
Wyoming, MI
<http://www.wmagg.org/speakers.htm>

March 28, thru May 6, 2007
Quilts Galore, Sisters in Stitches Exhibit
Herbert D. Doan Midland County History
Center, Midland, MI
Free Opening Reception: March 29, 2007,
7-9 p.m., Whitman Room/Atrium

April 4, 11, 18, 2007
Quilt Galore Gallery Strolls
Herbert D. Doan Midland County History
Center, Midland, MI

April 13-15, 2007
International Quilt Festival
Rosemont, IL
Contact: [http://www.quilts.com/home/shows/
index.php](http://www.quilts.com/home/shows/index.php)

April 17, 2007
Edyta Sitar, lecture
Log Cabin Quilters, Kalamazoo, MI
Contact: <http://www.log-cabin-quilters.com>

April 20 - 22, 2007
Quilters Squared Quilt Guild Exhibit
Herbert D. Doan Midland County History
Center, Midland, MI

April 21, 2007
Iron Bridge Quilt Show
Allegan Community Center, 330 Trowbridge
St., Allegan, MI
Contact: Terri@TerrisQuiltin.com

April 27-28, 2007
Merikay Waldovogel, lecture and workshops
Herbert D. Doan Midland County History
Center, Midland, MI

See the Vice President's Table for information
on these and other upcoming events. For the
events in Midland, check their website at:
[http://www.mcfta.org/A_Historical
Society/QuiltsGalore.htm](http://www.mcfta.org/A_Historical_Society/QuiltsGalore.htm)

TINY TREATS

April 2007 Tiny Treat – Buttercup

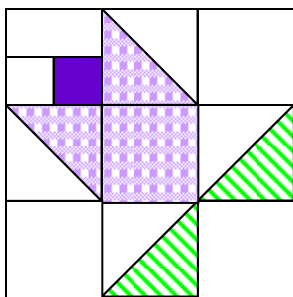
Background: White on White

Cut 3 – 3 ½ inch squares

Cut 2 – 3 7/8 inch squares for the half sq triangles

Cut 1 – 2 inch square

Cut 1 - 2 x 3 ½ inch rectangle



Flower: Your Choice

Cut 1 – 3 ½ inch square

Cut 1 – 3 7/8 inch square for the half sq triangles

Flower Center: Dark to coordinate with the flower

Cut 1 – 2 inch square

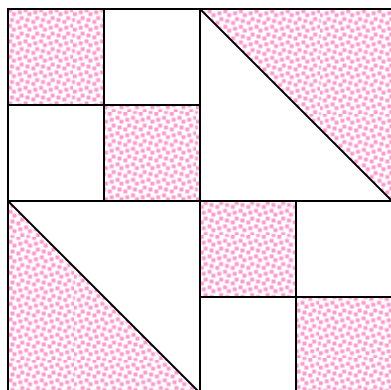
Leaf: Green

Cut 1 – 3 7/8 inch square for the half sq triangles

Assemble: Using the background fabric make 2 half sq triangles with the leaf fabric **and** 2 half sq triangles with the flower fabric. Assemble as illustrated. (Thangles – 3 inch finished)

Finished block size – 9 inch square

May 2007 Tiny Treat – Quilted Roses Special (Jewel Box)



Background– White on White

Cut 4 - 2 ½ inch squares for the 4-Patches

Cut 1 - 4 7/8 inch square for the half square triangles.

Color 1 – Pastel floral or print in shades of rose

Cut 4 - 2 ½ inch squares for the 4-Patches

Cut 1 - 4 7/8 inch square for the half square triangles.

Construct two 4-patches and 2 half square triangles

Assemble as illustrated

Finished block size – 8 inch square

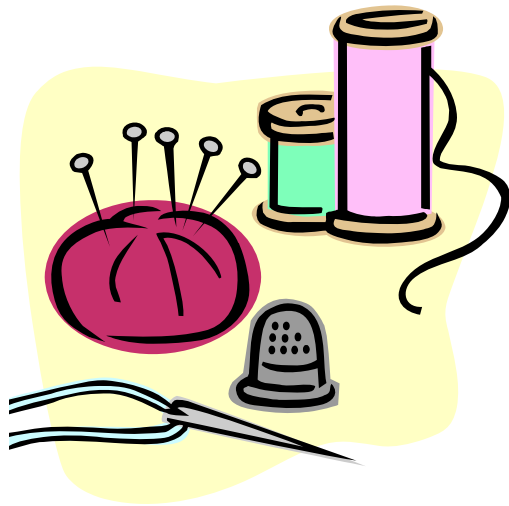
Tiny Treats is being taken over by the Quilters Anonymous Small Group. Jean Kaufmann is one of their spokespersons. The Golden Roses have done a fine job this past year as the Tiny Treats Chairs. Thanks to them for doing this (especially since they took on this job as new guild members)!!!

FAT CHANCE

Pink is for girls; blue is for boys. Snowflakes are for January; shamrocks are for March. You know the routine! But this time, the Board has decided to shake things up a bit! Instead of the usual fat quarter themes, we'd like to challenge your creativity and ask you to bring a fat quarter to each meeting that reminds you of the following singers or musical groups! It doesn't have to be a color. It doesn't have to have a picture of the group. It doesn't have to represent a song. It just has to represent something that is evocative of the singer! For example, for Frank Sinatra, who sang "New York, New York," you could bring an apple fabric! This promises to be lots of fun and it will give all of us, young and old, a chance to broaden our musical horizons! So here goes. We'll start out easy:

March 2007	Earth, Wind & Fire	November 2007	The Temptations
April 2007	Gene Autry/Roy Rogers/Dale Evans	December 2007	Lawrence Welk
May 2007	Cher	January 2008	The Moody Blues
June 2007	Jimmy Buffett	February 2008	Barenaked Ladies
July 2007	The Beatles	March 2008	The "Rat Pack"-
August 2007	Red Hot Chili Peppers		Frank Sinatra, Dean Martin, Sammy
September 2007	The Four Seasons		Davis, Jr.
October 2007	The Grateful Dead	April 2008	Elton John

The rules for Fat Chance are to enter one fat quarter (18" X 22") per month for the theme of the month. This is for members only, please.



Ethelbird & Eliza Kids

Fabric Online Especially for Kids
Babies, Youngsters, Tweens & Teens

www.ethelbird.com

Teresa Borton

517-327-1937

SAGINAW PIECEMAKERS QUILT GUILD PRESENTS ITS 26TH ANNUAL QUILT SHOW

"VINTAGE MEMORIES"

MAY 10-12, 2007

Thursday, May 10 4 - 8pm

Friday, May 11 10am-8pm

Saturday, May 12 10am - 4pm

VALLEY PLAZA RESORT

5221 Bay City Road

Midland, MI 48640

(off US 10 near I-75)

CAN'T MISS ACTIVITIES

*Exhibit of approximately 200 quilts crafted by
quilters from all over mid-Michigan*

*"Little Quilts" Live Auction to be held Saturday,
May 12 at 2:00pm*

*Vendors, Silent Auction, Quilt Raffle, Demos,
Make It-Take It, and quilt appraisals by a qualified
quilt appraiser.*

ADMISSION

ADULTS: \$5.00

CHILDREN 5-12 YEARS OF AGE: \$3.00

Children under age of 5: Free

CAPITOL CITY QUILT GUILD

Membership Registration

Name _____ Date _____ Membership Year _____

Address: _____

City: _____ State: _____ Zip: _____

Home phone: _____ Work phone: _____ Cell: _____

Email: _____ Day and Month of birth _____

Membership Dues:

- | | | | |
|---|---------|--|---------|
| <input type="checkbox"/> New | \$25.00 | <input type="checkbox"/> \$5 Late Renewal - after April 30 th | \$30.00 |
| <input type="checkbox"/> Renewal -due by April 30th | \$25.00 | <input type="checkbox"/> Membership after Nov 1 st | \$12.50 |

Newsletter Selection:

- I choose to read my newsletter on the CCQG web site
- I choose to receive my newsletter by mail

I would like to volunteer to assist CCQG by:

Please check all that you are interested in. (Note: this does not commit you.)

- | | | |
|--|--|--|
| <input type="checkbox"/> Audit | <input type="checkbox"/> Lecture for Schools | <input type="checkbox"/> Quilt Show |
| <input type="checkbox"/> Board position _____ | <input type="checkbox"/> Librarian | <input type="checkbox"/> Small Group Coordinator |
| <input type="checkbox"/> Community Coordinator | <input type="checkbox"/> Membership | <input type="checkbox"/> Speakers Bureau |
| <input type="checkbox"/> Demonstrations at Festivals | <input type="checkbox"/> National Quilting Day | <input type="checkbox"/> Tiny Treats |
| <input type="checkbox"/> Fat Chance | <input type="checkbox"/> Nominating Committee | <input type="checkbox"/> Web Site Master |
| <input type="checkbox"/> Heart Warmers | <input type="checkbox"/> Presenting a Program | <input type="checkbox"/> Other _____ |
| <input type="checkbox"/> Historian | <input type="checkbox"/> Publicity | |

Skills I can share:

- | | | |
|---|---|--|
| <input type="checkbox"/> Accounting | <input type="checkbox"/> Quilt instruction | <input type="checkbox"/> Hand quilt for others |
| <input type="checkbox"/> Computer Skills / Publishing | <input type="checkbox"/> Legal | <input type="checkbox"/> Other _____ |
| | <input type="checkbox"/> Machine quilt for others | |

Small group(s) I belong to: _____

- I am interested in small group membership.

(until April 30th, 2007) mail to:
Linda Ziegenhagen
4143 Watson Avenue
Holt, MI 48842

Drop In box @ guild meeting
with correct amount
no cash available for change
checks preferred

Make check payable to:
Capitol City Quilt Guild or CCQG
Check # _____
Cash _____
Amount Paid \$ _____

