



## UPCOMING PROGRAMS

### 2006-2007 Officers

**President**  
Lynn Richardson

**Vice President**  
Linda Wells

**Secretary**  
Marilyn Finley

**Treasurer**  
Janet Munn

Capitol City Quilt Guild meets on the third Thursday of each month at Faith Church, 2300 Lake Lansing Road, Lansing (across from Eastwood Towne Center).

#### INSIDE THIS ISSUE:

<i>President's Message</i>	2
<i>Guild Challenge</i>	3
<i>Community Page</i>	4
<i>Quilt Show Info</i>	5
<i>Small Group Page</i>	6
<i>Events Calendar</i>	12

### JANUARY

**January Board Meeting:** January 8, 6:30 PM at Foster Community Center. All members welcome!

**Guild Meeting:** Thursday, January 18, 7:15 pm

**Program:** Ami Simms  
"The World's Worst Quilts"

For those of you who are familiar with Ami, you know that this is going to be a hoot.

Ami will also be hosting two workshops: "String Quilting" on January 19 (6 hours) and "How to Improve Your Quilting Stitch" on January 20 (3 ½ hours).

### FEBRUARY

**February Board Meeting:** February 5, 6:30 PM at Foster Community Center. All members welcome!

**Guild Meeting:** Thursday, February 15, 7:15 pm.

**Program:** Guild Member/Author  
Kay Nickols

Kay Nickols, guild member and author of the upcoming book "Wonderful 1 Fabric Quilts", will do a lecture and trunk show which will feature many quilts from guild members.

**'Tis that Time of Year.....**to form the nominating committee for the 2007-2008 Board. We need volunteers for the committee. If you are interested, please contact Lynn Richardson. Also, think about what office you would like to hold next year. We need a Newsletter Editor, a Vice President, a Membership Chair, and there may be other jobs opening up. Talk to our present Officers and Committee Chairs to see if any of their jobs suit you. Participating is fun and you will work with really nice quilters.

### Fat Chance 2007

January Snow (blue and white)  
February Valentines (red and pink)

The rules for Fat Chance are to enter one fat quarter (18" X 22") per month for the theme of the month. This is for members only, please.

## PRESIDENT'S MESSAGE

If we had no winter, the spring would not be so pleasant.

—Anne Bradstreet, *Meditations Divine and Moral* (1664)

As I write this, I'm beginning to wonder if we will have a winter. But I'm sure that Michigan will soon provide its share of snow. Though January and February sometimes seem interminable, they yield to March with its sweet smell of damp dirt and promise of daffodils and tulips soon to appear. The winter months also provide a time to take advantage of indoor activities enforced by the bitter north winds. It's a time when my sewing machine seems to be at its busiest, and I look forward to long evenings piecing fabric of vibrant colors that remind me of spring and summer.

The guild will be busy over the next few months as it prepares for its bi-annual quilt show. Every two years, we have the opportunity to display our quilts for the public to see. It is a chance to promote quilting as an art form, modern as well as historical, and to teach others about quilting and why we do it. I hope that each of you will take this opportunity to volunteer to help in the show. If you do, you will meet other guild members who share your interests and enthusiasm. We all learn from one another, even if you are a "batik" person and the other prefers reproduction fabrics. We ask only for a three-hour block of time, two if you are able, and many of us plan to spend the entire weekend at the show. Please sign up at the guild meetings and look forward to a wonderful time on March 31 and April 1, 2007. And please don't forget to donate something for our silent auction. You can put those orphan blocks to good use as pillow tops, small wall quilts, table runners, placemats, etc. It is important to remember that the quilt show, and its

associated silent auction, and the raffle quilt are the major sources of income for the guild. They happen only once every two years and the guild needs your support to continue sponsoring the speakers and workshops which we all eagerly anticipate.

If you are a snowbird or are unable to help at the show for other reasons, please remember that the guild also provides Heartwarmer quilts and angel quilts for Sparrow Hospital. I have been told that the need for these quilts continues and if you have some time to spare, the guild would appreciate it if you could stitch a quilt for an ill or deceased child. Please contact Carolyn Solomon if you can help.

Of course, guild members are also involved in other activities. You will find some listed in this newsletter and others will be announced at the guild meetings. Participate as you feel that you have time. Quilters are known for being generous with their time and skills. Just make sure to first take time for yourself and then find time to become involved with the guild's activities. These are the ties that bind, whether you are birthing quilts or friendships.

I look forward to seeing the fruits of your labors on display this spring!

Lynn

This month, and following months, the newsletter will be sent only to those who did not opt to receive it on the website. The newsletter is available online at <http://capitolcityquiltguild.org> in PDF format for easy downloading and printing.

Labels are now available at the library for your Heartwarmers quilts

**THE CCQG WEBSITE IS  
HERE!!!**

**Check it out!**

<http://capitolcityquiltguild.org>

Check out these websites for inspiration for scrap quilts.  
[www.freequiltpatterns.info](http://www.freequiltpatterns.info)  
[www.quilting.about.com](http://www.quilting.about.com)  
[www.quiltmaker.com](http://www.quiltmaker.com)  
[www.quiltville.com](http://www.quiltville.com)  
[www.scrapquilt.com](http://www.scrapquilt.com)

## 2007 GUILD CHALLENGE—BITS & PIECES

Almost all quilters have them: boxes or plastic baggies or bins of scraps too small to put back into their stash, but too large (or too pretty) to toss. For this challenge, guild members are asked to begin with those *Bits & Pieces* and create a quilt, using the technique of your choice.

### The Rules

1. Quilts should be created predominately from scraps. Yardage may be used for backgrounds, borders, backings and binding.
2. Quilts must be at least 30" square and no larger than 60" x 90"

### The Deadline

Quilts will be hung for the March 2007 guild meeting. Judging, by the guild members and guests attending the meeting will be based on:

1. Best use of scraps
2. Design
3. Workmanship

### Need Scraps?

If you are a rare quilter who uses everything or gets rid of everything left over, you can still play—ask your friends and other guild members to share some scraps with you.

# *Super Bowl Sale*

Saturday February 3 in East Lansing from 10 am-4 pm

## *Thousands of Sale Items*

- **100% Cottons - 500 Bolts** (in addition to our Secret Stash Fabric) - 50% Off
- **Polar Fleece** - 50% Off
- **Patterns** - Selected patterns 50% or more Off
- **Selected Gift Items** - 50% Off
- **Scrapbook Items** - 75% Off
- **Fur Pieces** - 75% Off
- **Beads** -- 75% Off

**Husqvarna Viking, Pfaff,  
White Sewing Machines and  
Cabinets** -- new and used, overstock,  
open boxes, old models, new models, lots  
of machines and cabinets up to 40% off  
manufacturer's suggested retail

**Country Stitches**   
2200 Coolidge Road • East Lansing

## COMMUNITY PAGE

### Quilts True Art III

Linda Kuhlman and Cindy Mielock have been asked to curate a third display of small quilts for the Belen Gallery at the Michigan Women's Historical Center in Lansing. Because of the limited space, small quilts with a circumference of less than 160 inches are preferred. Quilts True Art III has no specific theme and small quilts of any color, subject or method will be considered. Quilts that were previously displayed at the Belen Gallery are not eligible for this exhibit. An entrance form is required and must be submitted by January 25, 2007. Please email Cindy if you would like an email version of the form. Cindy will also have the forms at guild meetings. This is a great opportunity to show small quilts you do not intend to display at the CCQG show this year. You may also price your quilts to sell. The Michigan Women's Historical Center enjoys our exhibits since it attracts more people to the Belen Gallery than any other exhibit they host. Quilts True Art III will be on display from February 4, 2007 through April 29, 2007. The opening reception will be Sunday, February 4, 2007 from 2:00 pm to 4:00 pm.

**FOR SALE:** Quality Oak Quilt Racks displays 3 quilts at once. Stand Alone racks in various stains and styles. \$100-135 Contact Paul Haan 517-323-4651 or paulhaan@comcast.net.

### Quilts for Habitat for Humanity Families

Several small groups in CCQG have generously volunteered and made quilts to welcome new Habitat for Humanity Lansing homeowners into their homes. In 2006, six families received quilts made by CCQG small groups. In 2007, Habitat for Humanity Lansing plans to complete homes for seven families. While some quilts are still in process, more will be needed in the future. If you or your small group are interested in making a quilt for a new Habitat for Humanity Lansing homeowner, please contact Cindy Mielock. Members of CCQG have been very generous in many ways and Habitat for Humanity Lansing recognizes this and appreciates all your efforts.

### In Memoriam

Longtime member Stephanie Winkler passed away at 85 years. She was retired from MSU as a faculty member of the College of Human Ecology. Funeral services were held at St. Thomas Aquinas Catholic Church in East Lansing on Saturday, Dec. 16. Many of you knew her well.

### Get Well Wishes

Idabell Bush is not recovering from her broken hip very fast. A 6" (finished) 9-patch in bright colors would help to cheer her up.

Nelda Orr had back surgery a couple of months ago and is still recovering. A 6" 9-patch would also cheer her up as well!

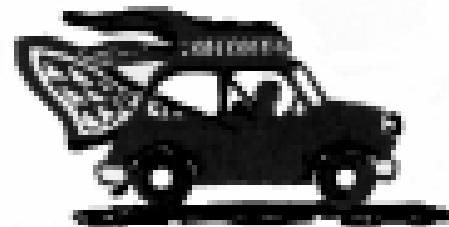
### Habitat for Humanity Lansing Raffle Quilt

Cindy Mielock is looking for CCQG members who are willing to help sell quilt raffle tickets for the Habitat for Humanity Lansing Raffle Quilt at the Home Shows at the Summit in Lansing from March 2 - 4, 2007 and the MSU Pavilion from March 15 -18, 2007. You get free admission to the home shows. Cindy will have sign-up sheets at the guild meetings or you may call her. Cindy also has packets of raffle tickets available to sell. Approximately \$2,250 in tickets have been sold so far in 2006. The overall goal is \$5,000 by the drawing date of May 4, 2007.

*Fat Chance &  
Tiny Treats Winners*  
*November*  
*Tiny Treats*  
*Barb Yaminishi*  
*Fat Chance*  
*Phyllis O'Connor*  
*December*  
*Tiny Treats*  
*Gail Drayton (28)*  
*Fat Chance*  
*Karen Berry (9)*

# MARK YOUR CALENDARS!!

## Our Quilt Show has a Date and Place



Going to Pieces 2007 will be held on Saturday, March 31 and Sunday, April 1 at Haslett High School, Haslett, MI. More details will be in the next newsletter and also on the website as they develop.

### SILENT AUCTION—QUILT SHOW 2007

Remember the Quilt Show's Silent Auction is only a few months away. The date is approaching rapidly. Five members have already contributed. Hurrah!!! Let's hear from the remaining 200+ members. And SMALL GROUPS, let's get busy and contribute again to the 2007 Silent Auction. Everyone's efforts are greatly appreciated.

Quilts of all sizes and themes, including seasonal do very well. Gift items are a nice addition to the selection. Hand-quilted items are especially desirable.

Questions? Contact Carole Davis.

### QUILT SHOW DOOR PRIZES

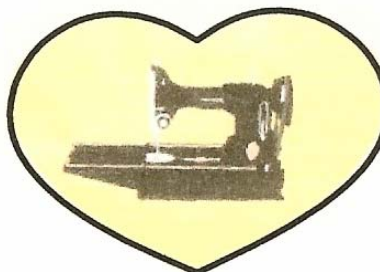
Part of the fun of attending the Capitol City Quilt Guild Quilt Show is the possibility of getting a **door prize**. And part of the fun is **giving one!** If you would like to use your Jo-Ann Fabric 40% off coupon and contribute a **new quilt related door prize** it will be much appreciated. I will place a plastic container marked "Quilt Show Door Prizes" near the stage at our monthly Guild Meetings to receive your donations. You will spread much joy!

### REGISTER YOUR QUILTS

Hopefully, you are finishing up your quilts for the March 31- April 1, 2007, Going to Pieces Quilt Show. You can go to the guild website [www.capitolcityquiltguild.org](http://www.capitolcityquiltguild.org) to download the Registration Form, Rules for Entry, and a Record of Submission. Go to the bottom of the Home Page to find the link to these forms. If you need more information, please contact John Putnam

The handout from October's LALA presentation is on the website. Now you have no excuse to be Ima Thorn!

One of our members has found Real Women Quilt.com, a free monthly online quilt magazine. Readers are invited to nominate quilters they know for future "Featured Quilter" articles. Go to [www.realwomenquilt.com](http://www.realwomenquilt.com) for more information.



*Quilt Sister Featherweights*

Jill Cooley  
Lansing, MI 48917  
517-214-4178

Pre & Post WWII Ladies, Loved, & Ready to Sew!  
Sales & Repair with 30 day guarantee

## SMALL GROUPS PAGE

### Small Groups 2006-2007

Here is a listing of the small groups now in our guild and people to contact in these groups. Please contact Mary Dunn with corrections. We have about 40 small groups!

Most groups have closed to newcomers because of restraints in their meeting locations and because they usually are involved in ongoing exchanges of blocks and fabrics. If you want information on projects other groups have tried, talk with the contact persons listed below.

If you have an idea for a new group or want to be in a group, sign up at the Vice President's table or contact Mary.

Cat House Quilters–Karen Berry  
 Charm & Daughters of Charm–Daisy DeHaven  
 Charming Bag Ladies–Nancy Cole, Gail Drayton, Nelda Orr  
 Charming Ladies–Janet Scott, Dorothy Mills  
 Clinton Piecemakers–Sally Boron, Arline Minsky  
 Crazy Quilt– Hope Fox  
 Creative Cutups–Reba Torongo  
 DBD Devotees–John Putnam  
 Eloquent Patchers–Judy Wells, Linda Ziegenhagen  
 \* Foster Friday–Gail Drayton  
 Friendship Stars–Mary Harvey  
 GASP–Cindy Mielock, Eileen Gianiodis  
 Holt Quilters– Gayle Cain  
 Ladies of the Cloth - Margaret Schwartz  
 \* Lady Fingers–Mary Harvey  
 \* LALA–Lansing Area Long Armers–Mary Dunn, John Putnam  
 Lunch Bunch–Carol Holm, Dorothy Jones  
 Material Girls–Sue Kesti, Mary Fairgrieve, Judy Wells  
 \* Mint City Quilters (St. Johns)–Brenda Broughan  
 No Cards Quilt Group–Mary McCulloch  
 Outlaws–Diedra Garlock, Carole Rasmusson, Bernice DeMarco  
 Paws to Quilt–Judith Green, Shawn Witherspoon  
 Pedal Pushers (in warmer weather)–Jan Gagliano  
 Quilter's Dozen–Carol Preston, Carolyn Solomon  
 Quilted Roses–Brenda and Laura Broughan  
 Quilters Anonymous–Jean Kaufmann, Chris Yelvington

Quilters Rule –Janet Keesler  
 Rainbow Sisters–Ellen and Dorothy Mills  
 Ruth's Block Exchange- Ruth Dukelow  
 Scrap Fever–John Putnam, Carolyn Solomon, Carole Davis  
 Scrap Happy– Ruth Farmer  
 Seamrippers–Barb Yamanishi, Lynn Richardson  
 Six Pack–Daisy DeHaven  
 Small Group to Dye For–Coreen Strzalka  
 Sunbonnet Sues in Canoes–Jan Gagliano  
 Threadbearers (Mason)–Deb Martens, Helen Harrison  
 Two Ladies and a Man–Flo Vogt and Jean Harrison  
 Sunbonnet Sues in Canoes–Jan Gagliano, Jane Johnson  
 Variable Stars–Jo Lange  
 Wild Wacky Westerners–Sue Ann Cole  
 Wednesday Group or Wed. Night Quilters- Marti Caterino, Alma Jury

If you want to meet other quilters, consider joining a small group. Small groups help us get better acquainted with other quilters, learn new things, and have fun doing projects together.

The International Quilt Festival/Chicago will be April 13-15, 2007. Fortunately that is just after our quilt show. Unfortunately, Jackie Beard has already planned a vacation for that time and will not be able to arrange a bus trip this year. If someone else is willing to handle this project, contact Jackie and she would be happy to help

## Ethelbird & Eliza Kids

Fabric Online Especially for Kids  
 Babies, Youngsters, Tweens & Teens

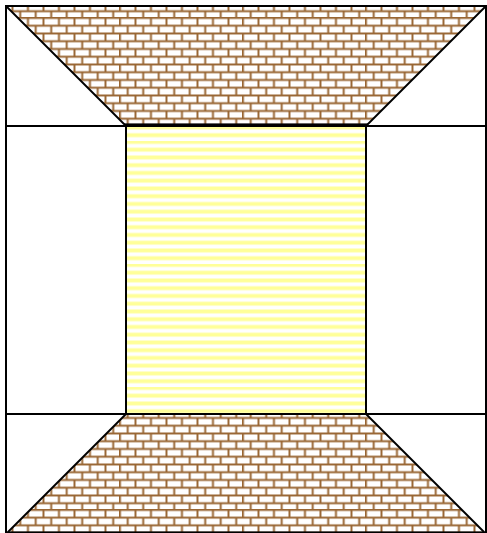
[www.ethelbird.com](http://www.ethelbird.com)

Teresa Borton

517-327-1937

# TINY TREATS

## February 2007 Tiny Treat – Spools



**Background:** Beige (Tone on Tone)

Cut 4 – 2 ½ inch squares

Cut 2 – 4 ½ x 2 ½ inch rectangles

**Thread:** Use any color – try using stripes or other fabric that resembles thread - Cut 1 – 4 ½ x 4 ½ inch square

**Spool:** Dark Tan - Cut 2 – 2 ½ x 8 ½ inch rectangles

**Assemble:**

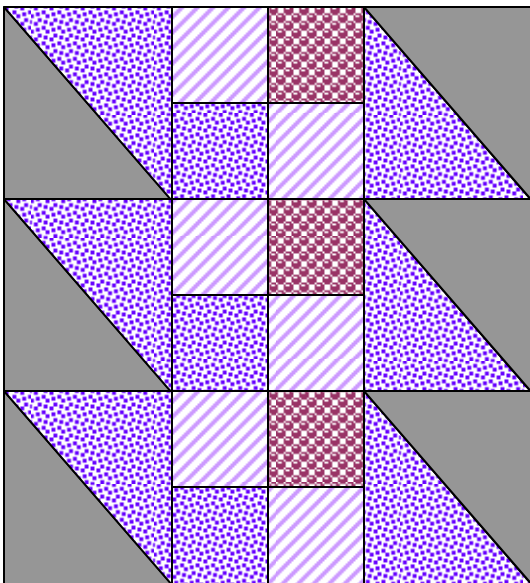
Place the 2 ½ inch background squares on the corners of the Spool fabric (2 ½ x 8 ½ inch rectangle). Use the snowball technique to make the corners of the upper and lower spool sections.

Sew the Thread section to the 2 rectangle background sections to make the middle section as illustrated.

Sew the spool top and bottom sections to the thread Section as illustrated.

Finished block size 8 x 8

## March 2007 Tiny Treat – Totem Pole



**Background – Black** – Cut 3 – 3 7/8 inch squares for the half square triangles.

**Your Choice of 3 Jewel Tone Colors** (Rubies, Emeralds, Sapphires, etc.)

**Color 1:** For half square triangles and middle patch

Cut 3 – 3 7/8 inch squares

Cut 3 – 2 inch squares

**Color 2:** For Middle patch - Cut 3 – 2 inch squares

**Color 3:** For Middle Patch - Cut 6 – 2 inch squares

**Assemble** – Make the half square triangles using the 3 7/8 inch squares of the background fabric and Color 1.

Assemble the block as illustrated.

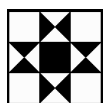
Finished block size – 9 inch square

## The Wacky Wild Westerners have been Going Wild!

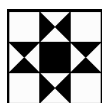
Over the past year, the members of the Wacky Wild Westerners have been exchanging 6 inch blocks with a patriotic or Americana theme. This wacky idea resulted in each member having 144 blocks and no real idea as to what to do with them. One of the members suggested that since the blocks were all red, white and blue, they be used to make quilts for the military personnel. Members of the group generously donated their blocks, and additional fabric for sashing, borders and backing. So far, the group has had two sewing bees and have 2 completed quilts from the first bee, and 9 tops to be finished from the second bee. There are still more Americana blocks to make a few more tops! All quilts will be donated to the Quilts of Valor Foundation, covering combat wounded service members whether physical or psychological. Batting is still needed to complete the remaining quilts. If you would like to donate batting to help the Wild Wacky Westerners, contact Alicia Debello or Coreen Strzalka.

In addition to the military quilts, the group also made a cancer quilt to help raise money for the Grand Ledge Relay for Life made up of log cabin blocks. Each block is a different color to represent a particular type of cancer. The center of each log cabin block is lavender which represents cancer awareness and survivors. The cancer quilt will be displayed at the Coffee Jam located at 6427 Centurion Dr, Lansing (across from the Sheraton on Creyts Road). Raffle tickets will be sold for the drawing to be held at the Grand Ledge Relay for Life in May. Minda Schneider will also be presenting a program on The Relay for Life for the Bretton Woods Loins Club, on March 15 at the North Pine Grill, located at 7711 W. Saginaw, Lansing.

The Wild Wacky Westerns had a great time (with a few wacky moments) sewing as a group and look forward to producing more quilts. Photos of the Wild Wacky Westerners in action are available online. Please contact Sophie or see the web address in the printed version of the newsletter.



### President's Block



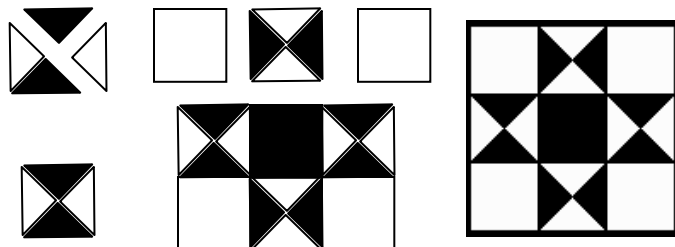
Let's each give Lynn Richardson a warm thank you for being our President. Please make her an Ohio Star block in bright and happy colors. (9 1/2 " unfinished)

Cut 2 background and 2 color squares 4 1/4" x 4 1/4" and cut each diagonally twice.

Cut 4 squares 3 1/2" x 3 1/2" of background fabric.

Cut 1 square 3 1/2" x 3 1/2" for center.

Piece like this:



Please sign the front of your block and leave it at the VP's table or give it to Mary Dunn.

Questions? Call Mary at 517-339-6804.

### Newsletter on the Web (how to opt out on the newsletter by mail)

Please contact membership chair Linda Ziegenhagen if:

- You do not want to receive the newsletter by mail (you will download it yourself from the CCQG website) or;
- You do not remember if you signed up to stop receiving the newsletter by regular mail.

The newsletter should be ready for downloading at the same time you would receive it by mail (during the second week of odd months).

If you have an AQS \$3 book certificate you do not plan to use, please consider giving it to Kristen Forester to purchase library books. Thanks!

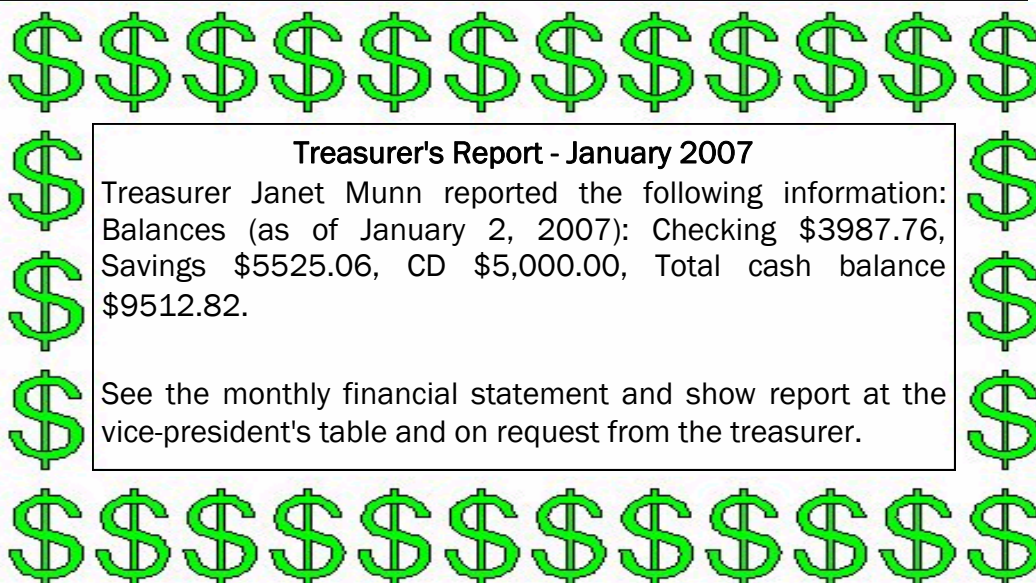


The Guild received the following letter:

To Whom it may concern,

I wanted to personally write to thank you for the wonderful quilt you made with love. We recently lost both of our twins at 22 weeks. Your beautiful quilt was wrapped around our baby Julian Alexander. Too many times in life people do not say thank you for things that made sue a huge difference. I wanted to let you know your work is very much appreciated.

With love and gratitude,  
Alexander & Daniele Grimal



**Treasurer's Report - January 2007**

Treasurer Janet Munn reported the following information:  
Balances (as of January 2, 2007): Checking \$3987.76,  
Savings \$5525.06, CD \$5,000.00, Total cash balance \$9512.82.

See the monthly financial statement and show report at the vice-president's table and on request from the treasurer.

Thank you to all my quilting friends who sent notes of sympathy. I remember a story about a Texas woman who was brought from deep depression by quilting. I'm looking forward to that.  
Dorothy Jones

### INDIANA HERITAGE QUILT SHOW

The show is scheduled for March 1-3, 2007 at the Bloomington Convention Center 302 South College Avenue, Bloomington, IN 47403. Times are Thursday and Friday from 9 a.m. - 6p.m. and Saturday 9 a.m. - 5 p.m. and admission is \$6.00 per day.

There will be over 200 quilts from around the country on display. Nationally known instructors will be teaching three days' worth of workshops for all levels of quilters. Special quilt exhibit in the main hall, plus Merchants Mall, book signings and a Teacher Q & A Forum will round out this quilting extravaganza. Other special quilt exhibits throughout the community with free transportation. Anyone who wants to enter a quilt must do so by January 17, 2007. Entry forms can be found on the show website at [www.ihqs-quiltshow.org](http://www.ihqs-quiltshow.org).

Please call 1-800-800-0037 with any questions.



*"FIND THE BASIC AND THE UNUSUAL!"*

- **Over 12,000 Bolts of Fabric (4,000 bolts of quilting type fabrics).** Brands include: Hoffman, Benartex, Moda, Concord, P & B, Marcus Bros., RJR, V-I-P, Springs, Peter Pan, Chanteclair, Bali, hand-dyed fabrics, homespuns, quilter's flannel and many more.
- **Fashion, Bridal, and Home Decorating Fabrics** (including Waverly, John Wolfe, & Robert Kaufman).
- **Silk, Velvet, Wool, Linen, Denim, Calico and many hard-to-find fabrics.**
- **Quilting Supplies and Books, Patterns, Sewing Notions, Trims and Accessories**

*Visit a family tradition that places friendly service, quality merchandise and value as their highest priority.*

**Open: 8:00 A.M. – 5:30 P.M.**  
**Monday – Saturday, Closed Sunday**  
**Will Ship Orders      Credit Cards Accepted.**

**YODER'S SHOPPING CENTER**  
P. O. Box 245, State Road 5,  
Shipshewana, Indiana 46565  
(260) 768-4887

---

### AREA QUILTING EVENTS

January 13, 2007  
African Folklore Embroidery Workshop  
Great Lakes African American Quilter's  
Network, Livonia, MI  
Contact:  
<http://greatlakesqqquilters.tripod.com>

January 17, 2007  
Marcia Knopp, NQA Certified Judge, lecture  
Piecemakers Quilt Guild, Saginaw, MI  
[http://www.piecemakersquiltguild.com/  
programs.htm](http://www.piecemakersquiltguild.com/programs.htm)

January 19, 2007  
Virginia Anderson, trunk show  
Genesee Star Quilters, Flint, MI  
Contact: Debbie Flocker,  
[diflocker131@comcast.net](mailto:diflocker131@comcast.net)

January 21, 2007  
Gwen Marston, lecture  
Greater Ann Arbor Quilt Guild, Ann Arbor, MI  
Contact: <http://www.gaaqg.org>

January 23, 2007  
Libby Lehman, lecture and workshops  
West Michigan Quilters Guild, Wyoming, MI

<http://www.wmgg.org/speakers.htm>

January 28, 2007  
Elizabeth Helwig, lecture and workshop  
Cameo Quilt Guild, Clawson, MI  
Contact: Carolyn Scheffler, 248-689-0206

January 28, 2007-October 28, 2007  
Redwork: A Textile Tradition in America  
Michigan State University Museum

February 20, 2007  
Carol Collins, lecture  
Log Cabin Quilters, Kalamazoo, MI  
Contact: [www.log-cabin-quilters.com](http://www.log-cabin-quilters.com)

February 21, 2007  
Sherry Peterson, Trunk Show  
Piecemakers Quilt Guild, Saginaw, MI  
[http://www.piecemakersquiltguild.com/  
programs.htm](http://www.piecemakersquiltguild.com/programs.htm)

February 23-24, 2007  
Great Lakes Heritage Quilt Show  
Canterbury Village, Lake Orion, MI  
Contact: [pbalsing@comcast.net](mailto:pbalsing@comcast.net)

See the Vice President's Table for information  
on these and other upcoming events.

---

**Capitol City Quilt Guild**  
**P.O. Box 26022**  
**Lansing, MI 48909**



**We're on the Web!!!**  
**[http://  
capitolcityquiltguild.org](http://capitolcityquiltguild.org)**

**Next Newsletter Deadline: February 15**

# **Finished Up Fiesta!**

## **2007 National Quilting Day**

Sponsored by Capital City Quilt Guild  
Everyone Welcome

March 17, 2007, 9:00 a.m. to 3:30 p.m.  
Holt Presbyterian Church, Holt  
(corner of Holt and Aurelius Roads)

We will celebrate NQD 2007 just **two** weeks before our Quilt Show on March 31-April 1<sup>st</sup> (no fooling). This year's theme, *Finished Up Fiesta!*, will be a celebration of our craft with others around the world and also an opportunity to have a much needed "block" of time to finish those quilted master-'pieces' for our show.

*Fiesta!* translates into Fun, Food, Fellowship and, now---  
No Un-Finished Objects!



If you didn't sign up for National Quilt Day at our December meeting, you will still have an opportunity to sign up in January, February and March. Contact Rosemary Nester or Susan Lilly for details.

**Join the fun! Sign up to help out on a committee; it is the best way to get to know your fellow guild members.**

### **PROGRAM:**

**Pillowcase:** Pat Johnston easy pillowcase pattern demo. Use it for your quilt storage!

**Design Wall:** Ellen Mills has a portable design wall idea you'll want to make today!

**Tote Bag:** Janet Kessler shows how to make a cute and quick tote.

**Borders:** Discussion and examples of various kinds and types of quilt borders.

At publishing time, we were still talking with vendors but there will be something fun from them, as well.

### **FOOD Bank Donations:**

Please bring at least two non-perishable food items to be donated to the Holt Food Bank. The shopping carts you see on your way in the door are where these should be placed. This is a way for us to thank the Holt Presbyterian Church and help those who are in need.



## CAT MATS:

As a service project for those who are interested and have all their Objects Finished—  
The Capital Area Humane Society uses small (20" x 22") quilted mats for the kittens and cats who are housed at the shelter. These quilts then go with them when they are adopted. We will be making mats during NQD to donate. We can use your donations of fabric; even small scraps and squares can be used so clean out your scrap stash for a needy kitty!

## FESTIVE BLOTTO:

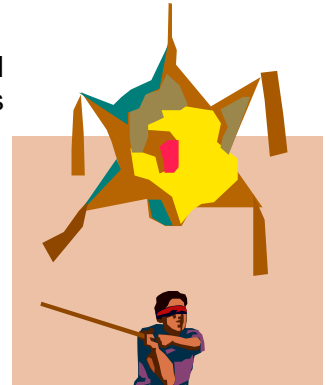
Sign up to make a block using all or part of the 8" square of the Fiesta! fabric provided when you register. Make one 12-1/2" (12" finished) block which you will turn in when you arrive. We will display the entries and your name will be entered in the drawing to be held at 1:00pm (right after lunch). LIMIT: One entry per person and you do not have to be present to win. The number of winners will be determined by the number of blocks entered.

## THE IMPORTANT PART OF ANY FIESTA!

Bring a dish to share. These will be placed on a table to be enjoyed throughout the day. Think creative! Try a new recipe or fix something you consider to be your signature dish.

For those who want to participate, we will be ordering sandwiches from a local eatery which will be delivered. Coffee and tea will be provided and the church has a refrigerator and microwave we can use.

We will also play a game using a piñata...learn more at NQD!



## WHAT TO BRING:

- Two (or more) items for the food bank
- Your masterpiece(s) to work on, making certain your tools and notions have your name on them so they don't party without you
- Power strips and extension cords which can be shared (all outlets are at the walls.)
- It's always good to have a few irons and pressing boards
- Your BLOTTO block for the drawing
- Food to share and lunch if you aren't interested in purchasing lunch