



## UPCOMING PROGRAMS

### 2006-2007 Officers

#### President

Lynn Richardson

#### Vice President

Linda Wells

#### Secretary

Marilyn Finley

#### Treasurer

Janet Munn

Capitol City Quilt Guild meets on the third Thursday of each month at Faith Church, 2300 Lake Lansing Road, Lansing (across from Eastwood Towne Center).

### INSIDE THIS ISSUE:

<i>President's Mes-</i>	2
<i>Raffle Quilt</i>	3
<i>Community Page</i>	4
<i>Quilt Show Info</i>	5
<i>Small Group Ac-</i>	6
<i>Events Calendar</i>	8

### SEPTEMBER

**September Board Meeting:** September 11, 6:30 PM at Foster Community Center. All members welcome!

**Guild Meeting:** Thursday, September 21, 7:15 pm

#### Program: DeLoa Jones and Heartwarmers Parade

DeLoa Jones is a professional longarm quilter and author and teacher. She will be doing a presentation entitled "Let's Get Organized", based her book "Organized to Perfection", which we have in our guild library. She will also be conducting two workshops: Curved Log Cabin (9/23, Foster Community Center) and Miniatures (9/24, Hannah Community Center, East Lansing)

For more information about DeLoa check out her website [www.delosasquiltshop.com](http://www.delosasquiltshop.com)

### OCTOBER

**October Board Meeting:** October 2, 6:30 PM at Foster Community Center. All members welcome!

**Guild Meeting:** Thursday, October 19, 7:15 pm.

#### Program: Edyta Sitar

Edyta is a quilter, designer, and teacher, and will be doing the presentation "Reasons for Quilting", which will include an extensive trunk show. Her patterns are available locally at Everlasting Stitches in Holt, through Keepsake Quilting catalog and on her website [www.laundrybasketquilts.com](http://www.laundrybasketquilts.com). Check it out!

## We Need Your Raffle Quilt Blocks!!!

As of Aug. 9th, Dorothy had 14 flower blocks and 4 9-patch blocks for the 2007 raffle quilt. She needs 54 of each block for the full quilt for 108 blocks in all. Half of our members need to help by making a block; have you made one? See the directions for the quilt blocks on page 3 of this newsletter. Please load Dorothy down with blocks by the September meeting.

## PRESIDENT'S MESSAGE

"Days decrease, and autumn grows, autumn in everything."

— Robert Browning

recolor the curtains for the next year. I remember how much fun I had transforming the faded orange pumpkins and pale aubergine eggplant into their vivid colors!

Nevertheless, when I grew up, I swore that my life would never be controlled by the school calendar—until I married a college professor, that is! Still, fall invigorates me in so many ways. The excitement of college football, the sounds of marching bands, the richness of the farm market harvests, the cool nights and warm days, and the glorious colors of the trees inspire me. I hope that you find inspiration, too, as we progress into fall. In fact, it's everywhere that you look—I saw the first leaves starting to turn red last night.

Sew straight lines and graceful curves,

Lynn

### Lost and Found

**LOST AND FOUND** at National Quilting Day 2006—3" X 12" ruler for rotary cutting, made by Ez International.

Contact **Rosemary Nester.**

"Marisa Canvas" blue denim shirt, size 1X, after the June Guild meeting

Please contact Lynn Richardson.

By the time that you receive this newsletter, Michigan State University freshmen will have descended on East Lansing, Labor Day will have passed, and bells will have rung to usher in the school year. Somehow, it is not January, but September that seems to mark the start of a new year for me. I suspect that it is because my mother taught first grade for nearly 40 years and our family eagerly undertook the preparations for the first day of school. Indeed, my mother, whose classroom faced west, stitched muslin curtains for her classroom and one year she invited the children to draw fruits and vegetables on them in crayon, which she set with a hot iron (in the days when crayons still had a wax base!) Every June, the curtains were taken down and washed, then over the summer, my mother and I would

This month, the newsletter will be sent only to those who did not opt to receive it on the website. The newsletter is available online at <http://capitolcityquiltguild.org> in PDF format for easy downloading and printing.

**THE CCQG WEBSITE IS HERE!!!**

Check it out!

<http://capitolcityquiltguild.org>

\$\$\$\$\$\$\$\$\$\$\$\$\$\$\$\$

### Treasurer's Report - September 2006

\$

Treasurer Jan Munn reported the following information:  
Balances (as of September 4, 2006): Checking \$3937.36,  
Savings \$5473.70, CD \$5,000.00, Total cash balance \$9411.06.

\$

\$

See the monthly financial statement and show report at the vice-president's table and on request from the treasurer.

\$

\$\$\$\$\$\$\$\$\$\$\$\$\$\$\$\$

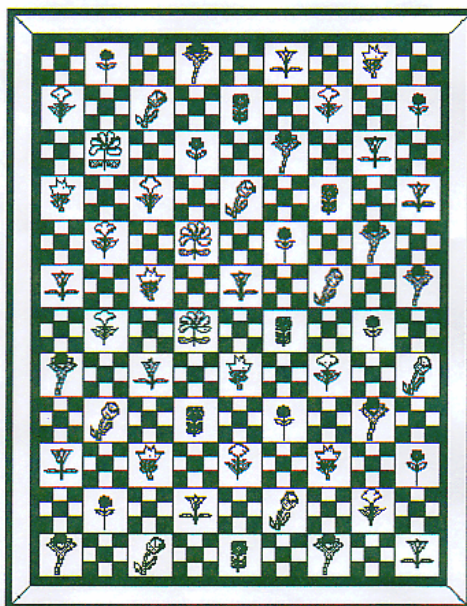
## 2007 RAFFLE QUILT

**Dorothy Jones** has again agreed to organize the raffle quilt this year. **Bev Wilkinson** will be the ticket and money manager of the Raffle.

After much discussion, we have decided on a quilt that will alternate 9-patch blocks with flower blocks (see picture at right). The individual squares are to be 3" finished, making a 9 ½" unfinished block. Please use 4 light squares and 5 medium squares in the 9-patch blocks. Sort of a dark medium would be good, but Dorothy does not want darks that will overwhelm the flowers.

The flower blocks, also to be 9 ½" unfinished, can be either pieced or appliquéd on an off-white background. Dorothy is looking

for a wide variety of flowers, so she did not choose a pattern. If you cannot find a flower pattern, contact her and she will provide a pattern for you.



Please don't all decide to do the 9-patch block. We will need equal numbers of each. Dorothy would like the unfinished blocks by September 1 which will take pressure off of her to put the quilt together and quilt it.

For the last quilt, having a variety of prints on the backs of the blocks produced an interesting back, so if you have some 10" pieces you are willing to donate, Dorothy will use them for the back!

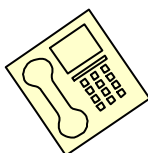
.01 per  
square  
inch

**THAT'S my QUILT**

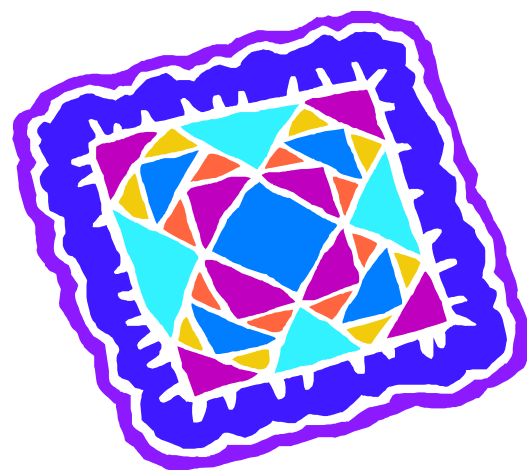
**long arm quilting**

**Coreen Strzalka**

Tel. (517) 622-1589



[lstrzalka@voyager.net](mailto:lstrzalka@voyager.net)





CCQG has been contacted by Kelly Bently, Hospice Volunteer coordinator for Great Lakes Hospice requesting quilts. They previously had ladies who crocheted and knitted smaller afghans, lap robes and slippers but they unable to continue due to health issues.

The GLH is looking for donations of smaller quilts over time. Need is determined by those who see the patient; nurse, home health aide, volunteers, chaplain, or social worker. If they have a patient who is in need of comfort they try to get them what they need. The GLH serves patients and families throughout 29 counties in mid-Michigan. Kelly, specifically, works with the volunteers out of their St. Johns, East Lansing and Howell offices.

If anyone has a small quilt they are willing to donate, or for more information, please contact, Linda Wells, Vice President.

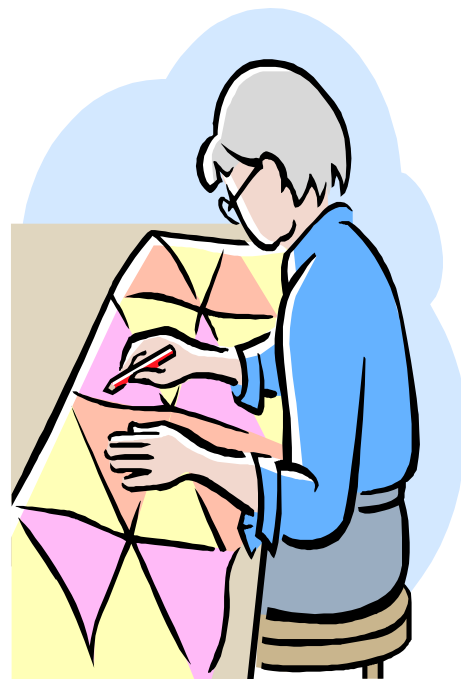
If you have an AQS \$3 book certificate you do not plan to use, please consider giving it to Kristen Forester to purchase library books. Thanks!

## COMMUNITY PAGE

Member Fran Mort sent the following note:

Thank you, Guild Members, for all you donated at the July Guild meeting toward the Katrina Project—"Building Bridges." It is truly a blessing to belong to Capitol City Quilt Guild and to be a part of what it stands for: "Each One teach One" (like our ancestors taught us!)

Fran says that the Portland Katrina project provides for 12 families. She also wants to extend a special **THANK YOU** to Vicky Hartig for machine quilting 10 quilts **AND** putting the binding on one side of them. Fran turned in 19 quilts on August 5 at a Quilting Bee in Portland at the new arts center.



## HEARTWARMERS UPDATE

A reminder to all members that our bi-annual Heartwarmers Parade will be during the September meeting. As August, we have donated 2360 quilts for chronically and critically ill children in our area. For those new to our guild, this program has been ongoing in the guild since 1989. We are modeled after the Linus Project, giving quilts to children in hospitals. This program is our guild's Community Service project and all of you have contributed generously over the years.

Hopefully, all of you look forward to the Heartwarmers Parade in September. As always, Carolyn Solomon sends a big thanks to all our members for donating their time and talents to this very worthwhile endeavor.



## Ethelbird & Eliza Kids

Fabric Online Especially for Kids  
Babies, Youngsters, Tweens & Teens

[www.ethelbird.com](http://www.ethelbird.com)

Teresa Borton

517-327-1937

## QUILT SHOW CHAIRS STILL NEEDED

We have a couple of chairs still open and Gayle is hoping to have date for the initial chair meeting by the next Guild meeting.

**Gayle still needs volunteers for the following positions:**

Publicity  
Volunteer Chair or Co-Chairs  
Quilt Drop Off and Return—Lansing location  
Quilt Return (only)

The following positions have been filled:

Silent Auction	Carole Davis
Prizes	Carol Holm
Food Vendor	Jill Croley
Raffle Quilt:	Dorothy Jones
Ticket Sales	Bev Wilkenson
Education Chair	Linda Kuhlman
Hang Show	Mary Edger/Linda Wells
Hospitality Co-Chairs	Rosemary Nester/Janet Scott
Vendors	Kay Nickols
Quilt Registration	John Putnam
Quilt Drop Off-East Lansing	Claire Vlasin/Jean Carlson
Vignettes	Margaret Rosekrans
Vendor-at-Show Coordinator	Judy Wells
Pre-hang Show	Pam Marcis

Gayle is hoping to have all the Chairs in place soon, to organize a meeting to plan the Quilt Show action/time schedule. Thanks to all who have come forward to help!

If you are interested in filling any of the above positions, please contact Gayle Cain.



## SILENT AUCTION—QUILT SHOW 2007

Calling all Quilters—Individuals and Groups—It is time to get started on those quilts and items for the Silent Auction for the 2007 Show. It is probably only eight to ten months away. Let's surpass the last show!

Quilts of all sizes and themes, including seasonal do very well. Gift items are a nice addition to the selection. Hand-quilted items are especially desirable.

Questions? Contact Carole Davis .

If you purchase items on behalf of the Guild **(ESPECIALLY PURCHASES FOR SHOW PREPARATIONS)**, please remember that we have 501(c)(3) tax-exempt status. For purchases you plan in advance, please see treasurer Jan Munn for our tax ID number

## Where in the World is CCQG? Fat Chance for 2006

September	Africa-African prints
October	Shipshewana-Amish Solids
November	Mexico-Brights, sombreros, jalapeno peppers
December	Poland-Polka Dots

The rules for Fat Chance are to enter one fat quarter (18" X 22") per month for the theme of the month. This is for members only, please.

## SMALL GROUP ACTIVITIES

### NEW SMALL GROUPS

If you want to meet other quilters, consider joining a small group. Small groups help us get better acquainted with other quilters, learn new things, and have fun doing projects together. Mary Dunn has volunteered to put sign-up sheets out on a table at guild meetings. Pick your interest or home area and sign up. She will pull together several people at organizational meetings and form some new small groups. If any small groups want new members, please let Mary know.

### New Library Books

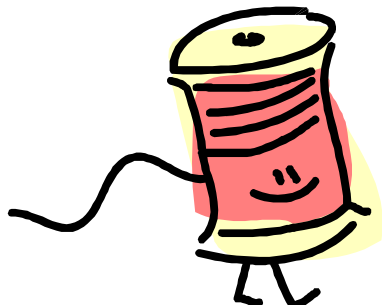
Three new books have been added to the CCQG library:

- Quilts from the Quiltmaker's Gift
- More Quilts from the Quiltmaker's Gift
- Egg Money Quilts (Eleanor Burns)

Check them out!

### "PAWS TO QUILT" SEEKS MEMBERS

The 'Paws to Quilt' CCQG subgroup is looking for interested quilters to join us the first Wednesday of each month, from 2-4 PM. The group currently offers regular show n' tell, works on scrappy and pet-related quilt projects; share through demos and hands-on, book reviews and general food, beverage and camaraderie. We welcome all skill levels, informal in our meetings and are not strictly animal owners, nor working on just pet-related items. Please contact Judith Green.



### Newsletter on the Web

(how to opt out on the newsletter by mail)

Please contact membership chair Linda Ziegenhagen if:

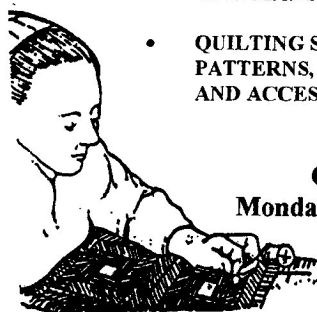
- You do not want to receive the newsletter by mail (you will download it yourself from the CCQG website) or;
- You do not remember if you signed up to stop receiving the newsletter by regular mail.

The newsletter should be ready for downloading at the same time you would receive it by mail (during the second week of odd months).

## YODER DEPARTMENT STORE

*"FIND THE BASIC AND THE UNUSUAL!"*

- **OVER 12,000 BOLTS OF FABRIC** with over 4,000 bolts of **quilting type fabrics**. Brands include: Hoffman, Benartex, Concord, P & B, Marcus Bros., Moda, RJR, Thimbleberries, V-I-P, Springs, Peter Pan, Chanteclair, Bali, hand dyed fabrics, homespuns, quilter's flannel and many more!
- **FASHION, BRIDAL AND HOME DECORATING FABRIC** (including Waverly, John Wolf, & Robert Kaufman)
- **SILK, VELVET, WOOL, LINEN, DENIM, CALICO, AND MANY HARD-TO-FIND FABRICS**
- **QUILTING SUPPLIES AND BOOKS, PATTERNS, SEWING NOTIONS, TRIMS AND ACCESSORIES**



**Open: 8:00 A.M. – 5:30 P.M.**  
**Monday – Saturday, Closed Sunday**  
**Credit Cards Accepted**  
**Will Mail Orders**

### YODER'S SHOPPING CENTER

P. O. Box 245, State Road 5, Shipshewana, IN 46565  
(260) 768-4887

[www.yoderdepartmentstore.com](http://www.yoderdepartmentstore.com)

email: [fabrics@shipshewana.com](mailto:fabrics@shipshewana.com)

# THANKS!

...to Faith Church who is allowing us to continue having our meetings in their hall for another year!

...from Cindy Mielock who reported she was able to sell \$1333-worth of raffle tickets for the Habitat Quilt at the Folk Festival.

...to Mary Dunn who has offered to do the quilt the raffle quilt on her long-arm machine. Please thank her for what will be a big job. Directions for the raffle quilt blocks (which are still needed) are on page 3.



## Fat Chance & Tiny Treats Winners

### July

*Tiny Treats*

*Barb Hamm (50)*

*Fat Chance*

*Karen Berry (10)*

### August

*Tiny Treats*

*Mary Dunn (60)*

*Fat Chance*

*Sarah Berry (11)*

## Quilting Websites

There are several great websites with free patterns for quilts and blocks. If you need to find a certain pattern or want to get some new ideas, try these websites.

[www.baumtextile.com](http://www.baumtextile.com)

[www.benartex.com](http://www.benartex.com)

[www.blockcentral.com](http://www.blockcentral.com)

[www.cranstonvillage.com](http://www.cranstonvillage.com)

[www.freequilt.com](http://www.freequilt.com)

[www.marcusbrothers.com](http://www.marcusbrothers.com)

[www.modafabrics.com](http://www.modafabrics.com)

[www.northcott.com](http://www.northcott.com)

[www.pbtex.com](http://www.pbtex.com)

[www.quilt.com](http://www.quilt.com)

[www.quiltbus.com](http://www.quiltbus.com)

[www.quilterscache.com](http://www.quilterscache.com)

[www.rirfabrics.com](http://www.rirfabrics.com)

[www.southseaimports.com](http://www.southseaimports.com)

[www.ttfabrics.com](http://www.ttfabrics.com) (Timeless Treasures)

## Huge Overstock Liquidation Sale Going On Now *Every Single Item on Sale!!!*

- All Fabric • All Sewing Accessories •
- All Books and Patterns • All Sewing Machines •
- All Embroidery Machines • All Sergers •
- All Sewing Furniture • All Embroidery Software •
- All Thread and Notions • All Gift Items • All Scrapbooking •
- All Sale Fabric Marked Down Even More •

## Everything on Sale

### *WIN A Fantastic Prize!*

Pfaff Sewing Machine, Pfaff Serger, Madeira Thread Chest and more

## *Country Stitches* ★

2200 Coolidge Road • East Lansing

(517) 351-2416 or 1-800-572-2031

Mon - Fri 9:30-8 • Sat 9:30-5:30

---

### AREA QUILTING EVENTS

September 25-26, 2006  
Elinor Peace Bailey, lecture and workshops  
West Michigan Quilters Guild, Wyoming, MI  
<http://www.wmqg.org/speakers.htm>

October 8-December 31, 2006  
Gee's Bend, The Architecture of the Quilt  
Indianapolis Museum of Art  
4000 Michigan Road, Indianapolis, IN  
<http://www.ima-art.org>

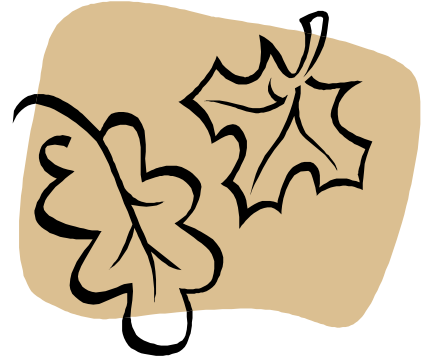
October 14, 2006  
Country Quilters Quilt Show  
Lawton Elementary School  
780 Second St., Lawton, MI

October 14-15, 2006  
Timeless Treasures  
Western Wayne County Quilt Guild  
555 West Columbia; Belleville, MI  
Contact: Roxann Baker, (734) 485-4271

October 17, 2006  
Rebecca Haarer, Amish quilts lecture  
Log Cabin Quilters, Kalamazoo, MI

Contact: Char Andrews, 269-323-8831

See the Vice President's Table for information on these and other upcoming events.



---

**Capitol City Quilt Guild**  
P.O. Box 26022  
Lansing, MI 48909



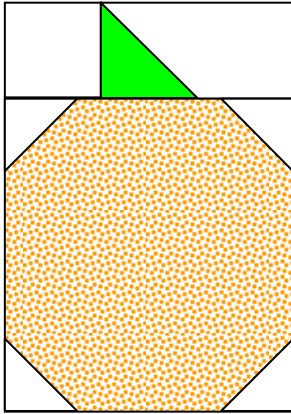
**We're on the Web!!!**  
[http://  
capitolcityquiltguild.org](http://capitolcityquiltguild.org)

**Next Newsletter Deadline: October 15**



# TINY TREATS

## October 2006 Tiny Treat – Pumpkin Patch



**Background:** Light beige - tone on tone

Cut 4 – 2 inch squares for the corners

Cut 1 – 2 ½ x 4 ½ inch rectangle

Cut 1 – 2 ½ inch square

**Pumpkin** – Shades of Orange or Rust

Cut 1 – 6 ½ inch square

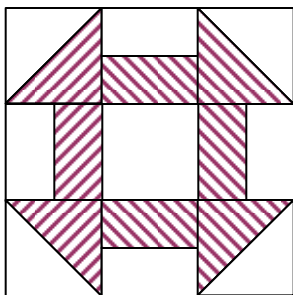
**Stem** – Green or Brown

Cut 1 – 2 ½ inch square

**Assemble:** Using the four 2 inch background squares, make the corners of the pumpkin section (snowball method). Draw a diagonal line on the Stem fabric. Place it right sides together on the left side of the rectangle. Sew on the line as shown and trim for seam allowance. Assemble the pieces as illustrated.

Finished block size 8 x 6

## November 2006 Tiny Treat – Churn Dash



**Background:** Off White – Tone on Tone

Cut 2 – 3 7/8 inch squares – cut in half diagonally

Cut 4 – 2 x 3 ½ inch rectangles

Cut 1 - 3 ½ Inch square for Center

**Color** - Scrappy

Cut 2 – 3 7/8 inch squares – cut in half diagonally

Cut 4 – 2 x 3 ½ inch rectangles

**To Assemble** – Make the half-square triangles using your favorite method (Thangles – 3 inch finished). Assemble as illustrated.

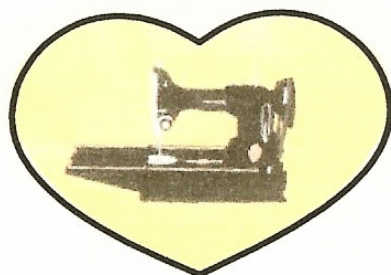
Finished block size 9 Inch Square

**QUILT NATIONAL '07**, fifteenth international juried competition for new innovative quilts, on display May 26- September 3, 2007 at the Dairy Barn Cultural Arts Center in Athens, Ohio (USA).

Jurors are internationally recognized artist quiltmakers Tim Harding (Stillwater, MN) and Paula Nadelstern (Bronx, NY); and Robin Treen, Exhibits Director, San Jose (CA) Museum of Quilts and Textiles.

The work must: (a) possess the most basic structural characteristics of a quilt, (b) be an original design of the entrant, (c) have been **completed after September, 2004** and (d) measure no more than 108" or 270 cm. in either direction. Jurors will grant nearly \$4,000 in prizes. **Entry deadline September 19, 2006.** Work selected for the exhibition will tour throughout the United States through 2009, and will be published in a full-color catalog produced by Lark Books (Asheville, NC).

For entry form, send self-addressed business-size envelope with 2-ounce postage to QN '07 Entry Form, Dairy Barn Arts Center, P.O. Box 747, Athens, OH 45701-0747, USA. Entry form is also available on the Internet at [www.quiltnational.com](http://www.quiltnational.com).



*Quilt Sister  
Featherweights*

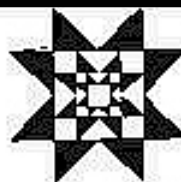
*Jill Cooley*

*Lansing, MI 48917*

*517-214-4178*

Pre & Post WWII Ladies, Loved, & Ready to Sew!

Sales & Repair with 30 day guarantee



**Custom Quilts  
& Sewing Center**

**1645 Haslett Rd Suite 12**

**Haslett**

**517-339-7581**

**Mon. Wed. Fri. 10-6**

**Tues. & Thurs. 10-8**

**Sat. 10-5**

**New Classroom Space**

**We have added classroom space to accommodate more students. We now have lots more elbowroom!**

**New Workshops**

**Sign up and pay for a class and receive a coupon for 10% off all your class needs.**

**New- Kits Workshops**

**We are beginning new kit classes.**

**Buy the kits and get the classes FREE**

**New classes added throughout the Christmas season**

The Western Wayne County Quilting Guild's seventh Quilt Show, "Timeless Treasures" will be held at Belleville High School [555 West Columbia; Belleville, MI 48111] on Saturday, October 14<sup>th</sup>, from 10 am to 6pm and Sunday, October 15<sup>th</sup>, from 11 am to 5 pm. Admission to the show is \$4.00 per adult. Children 12 and under are free with an adult.

The featured quilter will be Tina Roth and her beautiful quilted items. The show will have vendors, door prizes to win, and a silent auction to bid for items of interest.

On display will be the guild's Double Wedding Ring Raffle Quilt. This quilt is made of batik fabrics and is queen size. Raffle tickets are \$1.00 each or six for \$5.00.

All proceeds go to local Charities.

The Guild is seeking quilts to exhibit in their show. If you are interested, or have any questions, please contact Roxann Baker, 8545 Crescent Lane, Ypsilanti, MI 48197, (734) 485-4271 or [Roxb51@aol.com](mailto:Roxb51@aol.com).