



UPCOMING PROGRAMS

Calendar

July

10th Board Meeting
20th Guild Meeting

August

7^h Board Meeting
(location TBA)
17th Guild Meeting

Capitol City Quilt Guild meets on the third Thursday of each month at Faith Church, 2300 Lake Lansing Road, Lansing (across from Eastwood Towne Center)

INSIDE THIS ISSUE:

<i>President's Mes-</i>	2
<i>Raffle Quilt</i>	3
<i>Community Page</i>	4
<i>Quilt Show Chairs</i>	5
<i>Small Group Ac-</i>	6
<i>488 Pride</i>	7
<i>Events Calendar</i>	8

JULY

July Board Meeting: July 10, 6:30 PM at Marilyn Finley's home. All members welcome! Please contact a Board member for directions.

Guild Meeting: Thursday, July 20, **7:15 pm**

Program: Annual Garage Sale
A fun evening for buyers and sellers alike. Fabric, notions, tools, patterns, books, and anything else that's quilting related is of interest to members. We'll have tables available to display items for sale. Seller are responsible for taking care of their own.

AUGUST

August Board Meeting: August 7, 6:30 PM, location to be announced. All members welcome!

Guild Meeting: Thursday, August 17, **7:15 pm.**

Program: Member Quilt Businesses
Have you ever thought to yourself "I wish I could make money doing this?" We have four members who have agreed to be on a panel to discuss their experiences with turning their love of quilting into an income generating business.

- Beth Donaldson—Author and Quilt Collections Assistant at the Great Lakes Quilt Center at MSU
- Wendy Paskus—Longarm quilter and owner of "Stipples"
- Teresa Borton—Owner of an online fabric store "Ethelbird and Eliza Kids" www.ethelbird.com
- Pam Henrys—Owner of Everlasting Stitches quilt shop in Holt.

They will each do a short presentation and then be available for questions from the audience.



This month, the newsletter will be sent only to those who did not opt to receive it on the website. The newsletter is available online at <http://capitolcityquiltguild.org> in PDF format. **Please note**, personal contact information for members mentioned in the newsletter has been deleted in the online version to protect members' email and telephone information. For contact information, consult your membership directory.

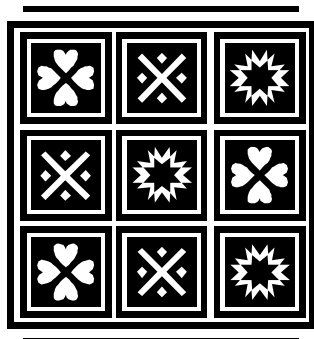
PRESIDENT'S MESSAGE

And what is so rare as a day in June?
Then, if ever, come perfect days.

—James Russell Lowell

opportunity on those stormy days to stay inside and piece. Portable projects also lend themselves to sitting beneath a shady tree, visiting with family and friends, and finishing that binding or stitching some embellishments to your wall quilt. Take time to smell the roses this summer and enjoy all that this Great Lakes State has to offer. But nurture not only your garden, but your creative spirit, and share with the rest of us your wonderful quilted creations!

It seems that we have been blessed with some perfect June days lately, ones that come with long, cool evenings where we don't mind having lap-sized quilts across our bare legs and even cooler nights where the summer quilts are welcomed! It sometimes is hard to quilt in the summer, when so many other things seem to demand our attention. There are gardens to be planted and tended, lawns to mow, picnics to have, and sun to revel in before the long winter encroaches again. But summer offers an abundant



The librarian has reported collecting \$41 in library fines. Please remember to return your books on time to allow others to enjoy them.

**THE CCQG WEBSITE IS
HERE!!!**

Check it out!

<http://capitolcityquiltguild.org>

A BIG THANKS to Clint Wells for the cabinets he is designed and built for our library. These cabinets can be locked and the books left in the church (which means our librarians will not have to cart them to each meeting). Thanks Clint!



Treasurer's Report - April 2006



Treasurer Jan Munn reported the following information: Balances (as of June 30, 2006): Checking \$5,482.16, Savings \$5,422.32 , CD \$5,000.00, Total cash balance \$15,904.48.



See the monthly financial statement and show report at the vice-president's table and on request from the treasurer. The budget will also be available upon completion.



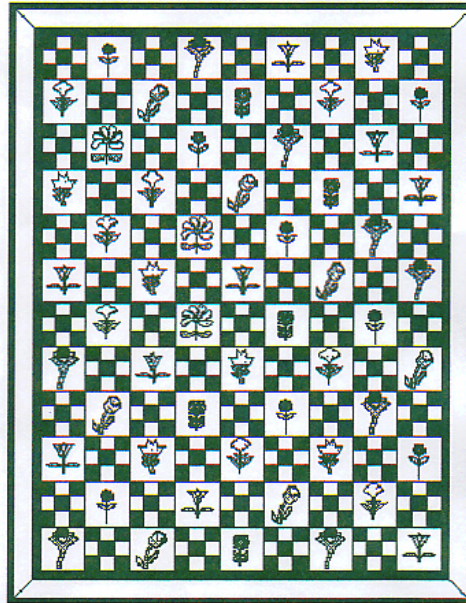
2007 RAFFLE QUILT

Dorothy Jones has again agreed to organize the raffle quilt this year. **Bev Wilkinson** will be the ticket and money manager of the Raffle.

After much discussion, we have decided on a quilt that will alternate 9-patch blocks with flower blocks (see picture at right). The individual squares are to be 3" finished, making a 9 1/2" unfinished block. Please use 4 light squares and 5 medium squares in the 9-patch blocks. Sort of a dark medium would be good, but Dorothy does not want darks that will overwhelm the flowers.

The flower blocks, also to be 9 1/2" unfinished, can be either pieced or appliquéd on an off-white background. Dorothy is looking

for a wide variety of flowers, so she did not choose a pattern. If you cannot find a flower pattern, contact her and she will provide a pattern for you.



Please don't all decide to do the 9-patch block. We will need equal numbers of each. Dorothy would like the unfinished blocks by September 1 which will take pressure off of her to put the quilt together and quilt it.

For the last quilt, having a variety of prints on the backs of the blocks produced an interesting back, so if you have some 10" pieces you are willing to donate, Dorothy will use them for the back!

FIND THE BASIC AND THE UNUSUAL!

- **OVER 12,000 BOLTS OF FABRIC with over 4,000 bolts of quilting type fabrics.**
Brands include: Hoffman, Benartex, Concord, P & B, Marcus Bros., Meda, RJR, Thimbleberries, V-I-P, Springs, Peter Pan, Bali, Chanteclaire, hand dyed fabrics, homespuns, quilter's flannel and many more!
- **FASHION, BRIDAL AND HOME DECORATING FABRIC** (Waverly, John Wolf, & Robert Kaufman)
- **SILK, VELVET, WOOL, LINEN, DENIM, CALICO, AND MANY HARD-TO-FIND FABRICS**
- **QUILTING SUPPLIES AND BOOKS, PATTERNS, SEWING NOTIONS AND ACCESSORIES**

Visit a family tradition that still places friendly service, quality merchandise and value as their highest priority.



Open: 8:00 A.M. – 5:30 P. M.
Monday - Saturday, Closed Sunday
Will Mail Orders Credit Cards Accepted

YODER'S SHOPPING CENTER
P. O. Box 245, State Road 5, Shipshewana, IN 46565
(260) 768-4887

www.yoderdepartmentstore.com e-mail: fabrics@shipshewana.com

COMMUNITY PAGE

The Western Wayne County Quilting Guild's seventh Quilt Show, "Timeless Treasures" will be held at Belleville High School [555 West Columbia; Belleville, MI 48111] on Saturday, October 14th, from 10 am to 6pm and Sunday, October 15th, from 11 am to 5 pm. Admission to the show is \$4.00 per adult. Children 12 and under are free with an adult.

The featured quilter will be Tina Roth and her beautiful quilted items. The show will have vendors, door prizes to win, and a silent auction to bid for items of interest.

On display will be the guild's Double Wedding Ring Raffle Quilt. This quilt is made of batik fabrics and is queen size. Raffle tickets are \$1.00 each or six for \$5.00. All proceeds go to local Charities.

The Guild is seeking quilts to exhibit in their show. If you are interested, or have any questions, please contact Roxann Baker, 8545 Crescent Lane, Ypsilanti, MI 48197, (734) 485-4271 or Roxb51@aol.com.

Habitat Raffle Quilt Winner
Erik Larsen of East Lansing is the winner of the Habitat for Humanity Raffle Quilt. His name was drawn on June 1, 2006.

The raffle quilt raised \$5,142.50 to benefit Habitat for Humanity Lansing. CCQG members were a great help in making the quilt and selling raffle tickets. Thank You!!!

The next Habitat raffle quilt is underway and will be completed in time to sell tickets at the Great Lakes Folk Festival, August 12 - 13, 2006.

If you are interested in helping sell raffle tickets at the booth featuring our guild, please contact Cindy Mielock.

Gail Cain is seeking donations of quilting materials for her church project. Gail and several women at her church plan to make quilts and donate them to the Wanger family in Mason, which consists of eleven children, all but one has special needs. Gail plans to teach quiltmaking skills to her church members while contributing this family. If you have quilt materials you could donate, especially batting and fabric, please contact Gail.

.....
Fran Mort is looking for quilt tops and quilt blocks all summer to assemble into quilts for 12 families displaced in Port Sulfer, Louisiana. Please contact Fran for more details.

GREAT LAKES FOLK FESTIVAL

The Great Lakes Folk Festival is honoring guilds this summer. They have chosen the Capitol City Quilt Guild to represent quilters. There will also be knitters, weavers, and lace makers at the festival. They would like us to demonstrate our craft. You may bring your own project or help teach the public to quilt on the Museum's demo quilt (you can drop by and demo without lugging your stuff around!).

The festival runs from August 11-13, 2006 in downtown East Lansing. The following shifts are available for volunteering:

Saturday, August 12, noon-2 pm	Sunday, August 13, noon-2 pm
Saturday, August 12, 2-4 pm	Sunday, August 13, 2-4 pm
Saturday, August 12, 4-6 pm	Sunday, August 13, 4-6 pm

Some volunteers want to make sure they don't miss their favorite musical acts. The musicians have been chosen, but the schedules aren't ready yet. Go to: <http://greatlakesfolkfest.net> for information on the scheduling. The schedules should be ready in June.

If you would like to volunteer you can call Beth Donaldson. All volunteers will receive a volunteer t-shirt. The t-shirt gives you access to the green rooms (which have free water, snacks, air conditioning and flush toilets!). If you volunteer for more than one shift, you also get meal tickets. The last bonus is we are allowed to sell raffle tickets and quilted items. No fees will be charged for this. We will provide our own cashiers. If you want to sell, you must volunteer.

QUILT SHOW CHAIRS NEEDED

The following positions have been filled:

Silent Auction:	Carole Davis
Prizes:	Carol Holm
Raffle Quilt:	Dorothy Jones
Ticket Sales:	Bev Wilkenson
Education Chair:	Linda Kuhlman
Hospitality Co-Chairs	
	Rosemary Nester and Janet Scott
Vendors	Kay Nickols
Quilt Registration	John Putnam
Quilt Drop Off:	
	East Lansing Claire Vlasin
Vignettes	Margaret Rosekrans
Vendor-at-Show	
	Coordinator Judy Wells

Gail still needs volunteers for the following positions:

- Publicity
- Food Vendor
- Hang Show (Performance Gym)
- Hang Show (Practice Gym)
- Pre-hang Show (Depends on Date) for Pam Marcis
- Quilt Drop Off and Return—Lansing location
- Quilt Return (only)
- Volunteer Co-Chair
- Volunteer Co-Chair

Gail is hoping to have all the Chairs in place soon, to organize a meeting to plan the Quilt Show action/time schedule. Thanks to all who have come forward to help!

If you are interested in filling any of the above positions, please contact Gail Cain.

Fabric Trade-In Sale

(or the "Clean Out Your Closet" Sale)

July 17-22

For every full pound of fabric you bring in, we will give you money off the purchase of more fabric (\$2.00 a pound for all cotton quilting fabrics or \$1.00 a pound for other fabrics). If you bring in 5 pounds of cotton quilting fabric, you will get \$10 off your fabric purchase. You can bring in any kind of clean, new fabric. You can use your "trade-in credit" on any non-sale fabric July 17-22 or save your credit and use it later.

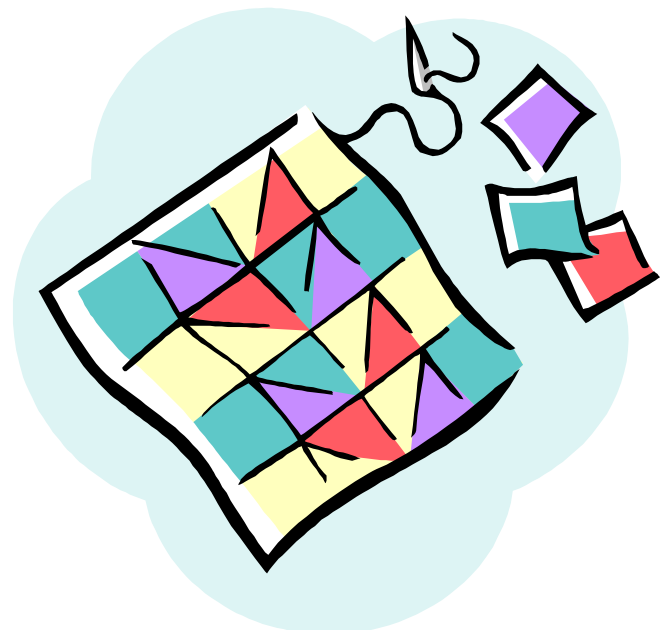
Yard Sale - July 17-29

\$1.50 or \$2.50 a pound

We will sell the fabric which is traded-in for \$2.50 a pound for all cotton quilting fabric or \$1.50 a pound for all other fabrics.

Country Stitches 

2200 Coolidge Road • East Lansing
(517) 351-2416 or 1-800-572-2031
Mon - Fri 9:30-8 • Sat 9:30-5:30



QUILT NATIONAL '07, fifteenth international juried competition for new innovative quilts, on display May 26-September 3, 2007 at the Dairy Barn Cultural Arts Center in Athens, Ohio (USA).

Jurors are internationally recognized artist quiltmakers Tim Harding (Stillwater, MN) and Paula Nadelstern (Bronx, NY); and Robin Treen, Exhibits Director, San Jose (CA) Museum of Quilts and Textiles.

The work must: (a) possess the most basic structural characteristics of a quilt, (b) be an original design of the entrant, (c) have been **completed after September, 2004** and (d) measure no more than 108" or 270 cm. in either direction. Jurors will grant nearly \$4,000 in prizes. **Entry deadline September 19, 2006.** Work selected for the exhibition will tour throughout the United States through 2009, and will be published in a full-color catalog produced by Lark Books (Asheville, NC).

For entry form, send self-addressed business-size envelope with 2-ounce postage to QN '07 Entry Form, Dairy Barn Arts Center, P.O. Box 747, Athens, OH 45701-0747, USA. Entry form is also available on the Internet at www.quiltnational.com.

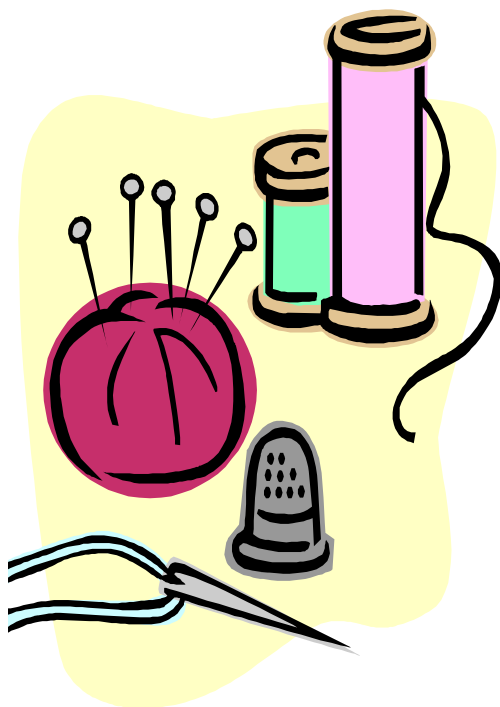
SMALL GROUP ACTIVITIES

"PAWS TO QUILT" SEEKS MEMBERS

The 'Paws to Quilt' CCQG subgroup is looking for interested quilters to join us the first Wednesday of each month, from 2-4 PM. We currently have four members; offer a regular show and tell, work on pet-related quilts for the upcoming 2007 quilt show; share our fields of expertise through demos and hands-on; book reviews and general food, beverage and camaraderie. If you like scrappy quilts and/or particularly interested in pets and related quilting activities, come join us. Contact Judith Green for more information.

NEW SMALL GROUPS

If you want to meet other quilters, consider joining a small group. Small groups help us get better acquainted with other quilters, learn new things, and have fun doing projects together. Mary Dunn has volunteered to put sign-up sheets out on a table at guild meetings. Pick your interest or home area and sign up. She will pull together several people at organizational meetings and form some new small groups. If any small groups want new members, please let Mary know. You may contact Mary .



Hospice of Lansing (6035 Executive Drive) will hold an Open House from 4:30 to 6:30pm on July 12 to exhibit the quilts mentioned in last month's newsletters. Featured will be the work of Charm & Daughters, The Six Pack, and Ruth's Block Exchange, including eight full-to-queen size quilts, eight large and 11 smaller wall quilts.

If you purchase items on behalf of the Guild, please remember that we have 501(c)(3) tax-exempt status. For purchases you plan in advance, please see treasurer Jan Munn for our tax ID number

**Where in the World is CCQG?
Fat Chance for 2006**

July	Michigan-Vacation symbols, picnic, beach, lake, boat
August	Outer Space-spaceships, planets, solar systems, deep blues, black, stars
September	Africa-African prints
October	Shipshewana-Amish Solids
November	Mexico-Brights, sombreros, jalapeno peppers
December	Poland-Polka Dots

The rules for Fat Chance are to enter one fat quarter (18" X 22") per month for the theme of the month. This is for members only, please.

"Alzheimer's: Forgetting Piece by Piece," an exhibit of approximately 50 art quilts, invitational and juried, that will travel throughout the United States for three years. Each quilt will interpret Alzheimer's disease in some way.

Bernina of America has donated TWO Bernina Aurora 440QE sewing machines with the Bernina Stitch Regulator (BSR), and **you** can win one! Submit a quilt for the exhibit. Each quilt submitted earns one chance to win, whether the quilt is selected to be in the exhibit or not. The winner will be selected at random by Ami Simms, between July 4 and July 15, 2006. Submit as many quilts as you like. See www.amisimms.com.

Shawn Witherspoon is looking for quilters to assist in a project for the Ingham County Humane Society. Please contact Shawn.

**Fat Chance &
Tiny Treats Winners**
May
Tiny Treats
Daisy Dehaven (29)
Fat Chance
Brenda Broughan
(14)

June
Tiny Treats
Carol Schon
Fat Chance
Rosemary Nester (9)

488 PRIDE

Linda Plyler, CCQG member and Postmistress of the Shaftsbury Post Office, was featured on the Michigan Magazine Show on WKAR-TV on Saturday, June 17, 2006. Linda created the "488 Pride" quilt, which features 80 towns in the 488 postal zip code district in central

Michigan. Lansing is not on the quilt, since it is under a different director. **Cathy Peskey** of Elsie was also interviewed. Cathy wrote the book that describes all the towns in "488 Pride". Congratulations on a job well done!

THANK YOU to Julie Larson for her donations to the library. Julie donated Art Nouveau Quilts and Hard Times/Splendid Quilts. Check these out in the Guild library.

Ethelbird & Eliza Kids

Fabric Online Especially for Kids
Babies, Youngsters, Tweens & Teens

www.ethelbird.com

Teresa Borton 517-327-1937

AREA QUILTING EVENTS

July 15-16, 2006

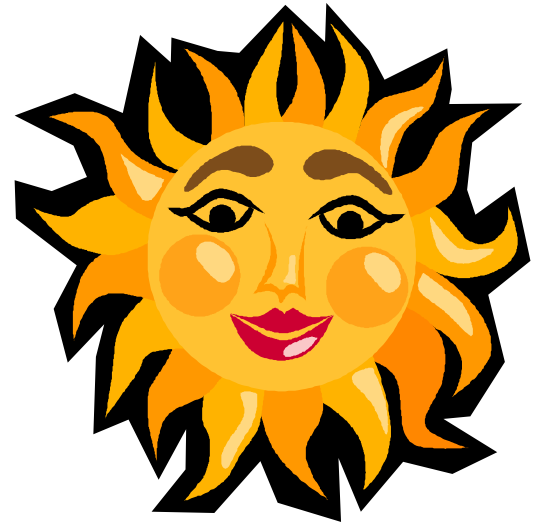
Lansing Area Patchers Quilt Show
Haslett High School
Haslett, MI

July 29-30, 2006

Ann Arbor Quilt Show
Washtenaw Community College
4800 East Huron River Dr
Ann Arbor, MI

August 11-13, 2006

Demonstrations at
the Great Lakes Folk Festival
East Lansing, MI



See the Vice President's Table for information on these and other upcoming events.

Capitol City Quilt Guild

P.O. Box 26022



We're on the Web!!!
<http://capitolcityquiltguild.org>

Next Newsletter Deadline: August 15